



RoHS Compliant
2002/95/EC

REV.	ECN.	NO.	APPD.

A

B

C

D

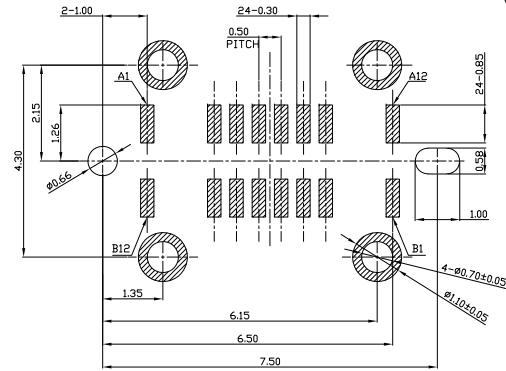
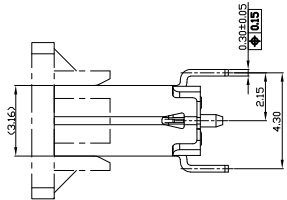
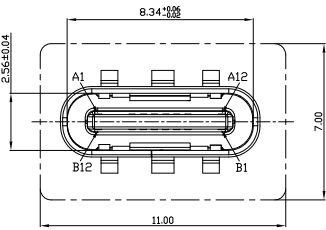
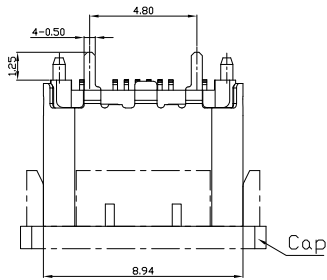
A

B

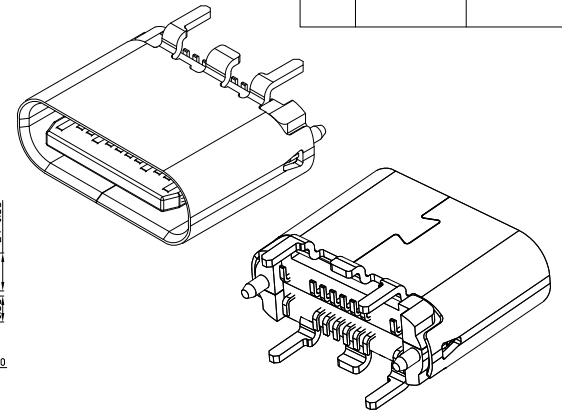
C

D

E

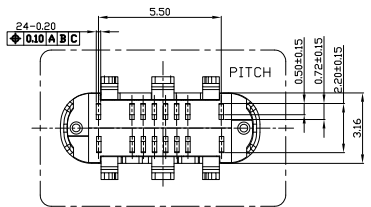
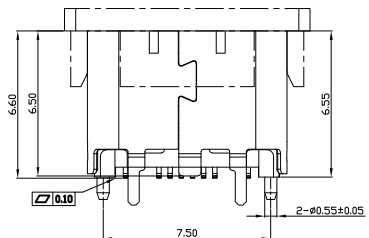


RECOMMENDED P.C.B. LAYOUT (T:1.00mm)
TOLERANCE UNSPECIFIED ±0.05mm
SCALE: 2:1

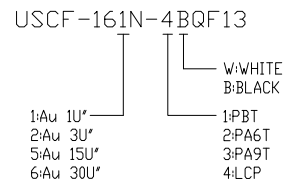


USB TYPE-C 16PIN FULL-FEATURED RECEPTACLE INTERFACE PIN ASSIGNMENTS

Signal Name	Signal Name
A1 GND	B12 GND
A4 VBUS	B9 VBUS
A5 CC1	B8 SBU2
A6 Dp1	B7 Dn2
A7 Dn1	B6 Dp2
A8 SBU1	B5 CC2
A9 VBUS	B4 VBUS
A12 GND	B1 GND



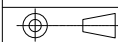
- NOTES:
 1.ELECTRICAL CHARACTERISTICS:
 1)CURRENT RATING: 5A FOR VBUS; 1.25A FOR GND PIN; 0.25A FOR OTHER PIN.
 2)INSULATION RESISTANCE: 100MΩ Min
 3)CONTACT RESISTANCE: 40mΩ Max.
 4)WITHSTANDING VOLTAGE: 100V AC R.M.S.
 5)OPERATING TEMPERATURE: -55°C ~ 85°C
 2.MECHANICAL CHARACTERISTICS:
 1)MATING FORCE: 5N~20N
 2)UNMATED FORCE: 8N~20N AFTER TEST
 3)DURABILITY: 10,000 CYCLES
 3.DIMENSIONS MARKED "▼"
 TO BE CHECKED BY Q.C & IPQC.



Bill of materials:

NO	PARTS	MATERIAL	QTY	FINISHING	X.	±0.50	X.*	±3'	UNITS	mm
5	CAP	LCP+30%GF	1	UL94V-0	X.	±0.50	X.*	±3'	UNITS	mm
4	MID PLATE	STAINLESS STEEL	1		.X	±0.35	.X*		MAT'L	
3	SHELL	STAINLESS STEEL	1	PLATED NICKEL	.XX	±0.25	.XX*		SEE NOTE	
2	CONTACT	COPPER ALLOY	16	PLATED GOLD/TIN	.XXX	±0.10	.XXX*		FINISH	
1	MOLDING	LCP+30%GF	1	UL94V-0					SEE NOTE	
NO	PARTS	MATERIAL	QTY	FINISHING					Q'TY	

THESE DRAWINGS AND SPECIFICATIONS ARE THE PROPERTY OF ACCURATE INNOTECH INC AND SHALL NOT BE REPRODUCED, COPIED OR USED IN ANY MANNER WITHOUT THE PRIOR WRITTEN CONSENT OF ACCURATE INNOTECH INC.



雅安科技有限公司
ACCURATE INNOTECH INC.

TITLE: USB 3.1 CF VERTICAL H=6.5 16PIN SMT TYPE
 DR: Ricky 2020/03/25
 CHKD: Ricky 2020/03/25
 APPD:

PART NO.:		USCF-16XN-4BQF13	
DWG NO.:		AII-QF13	
SCALE	SHEET	REV.	CUSTOMER DRAWING
1:1	1/1	B	