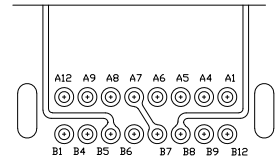
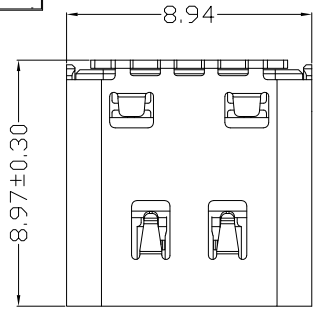


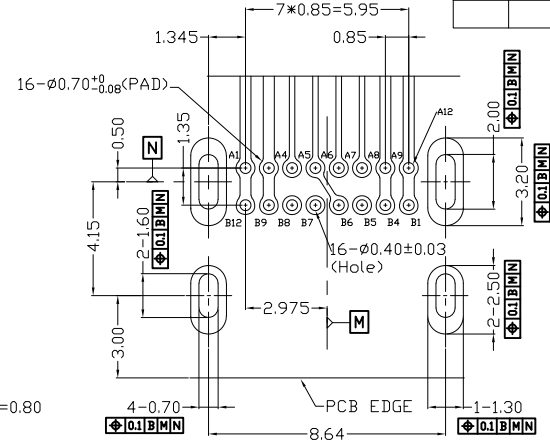
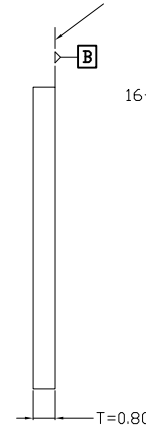


RoHS
Compliant
2002/95/EC

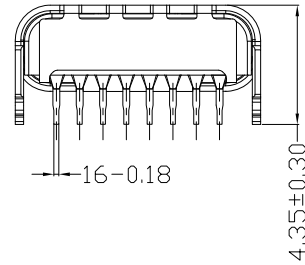
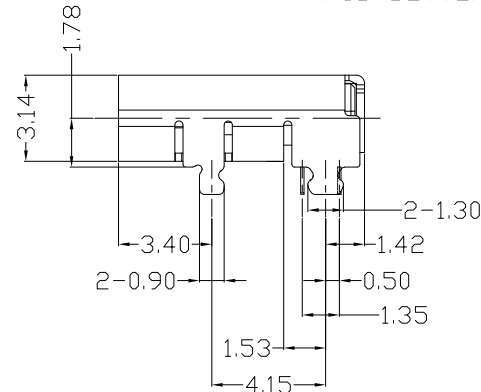
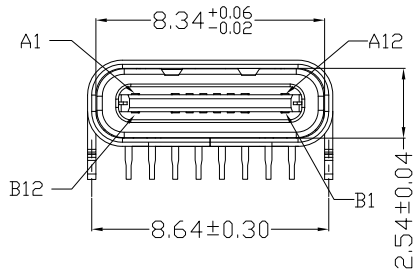
| REV. | ECN. | NO. | APPD. |
|------|------|-----|-------|
| | | | |
| | | | |



PCB BOTTOM SURFACE



RECOMMENDED P.C.B LAYOUT
GENERAL TOLERANCE: ±0.05
PCB TOP SURFACE



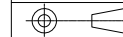
| A1 | GND | B12 | GND |
|-----|-------------|-----|-------------|
| A4 | VBUS | B9 | VBUS |
| A5 | CC1 | B8 | SBU2 |
| A6 | DP1 | B7 | DN2 |
| A7 | DN1 | B6 | DP2 |
| A8 | SBU1 | B5 | CC2 |
| A9 | VBUS | B4 | VBUS |
| A12 | GND | B1 | GND |
| PIN | SIGNAL NAME | PIN | SIGNAL NAME |

- NOTES:
- ELECTRICAL:
 - CURRENT RATING: 3AMP MAX;
 - INSULATION RESISTANCE: 100MΩ MIN 250V DC;
 - CONTACT RESISTANCE: 40mΩ MAX;
 - WITHSTANDING VOLTAGE: 100V AC;
 - OPERATING TEMPERATURE: -30°C TO +80°C.
 - Mechanical:
 - Mating Force: 20N MAX.
 - Unmating Force: 6N MIN.
 - DIMENSIONS MARKED "▼"
TO BE CHECKED BY Q.C & IPQC.

4.PART NO.
USCF-16*N-4BR60
W/WHITE
B/BLACK
1:4u 1U*
2:4u 3U*
5:4u 15u*
6:4u 30U*
1:PBT
2:PA6T
3:PA9T
4:LCP

| | | | | | | | |
|----|----------|-----------------|-----|------------|---------|----------|--|
| 5 | | | | .X ±0.30 | .X' ±1' | UNITS | mm |
| 4 | HOOK | STAINLESS STEEL | 1 | .XX ±0.20 | .XX' | MAT'L | |
| 3 | SHELL | STAINLESS STEEL | 1 | .XXX ±0.10 | .XXX' | SEE NOTE | TITLE: USB TYPE CF 板上型6P 双排全插板上中心1.78 |
| 2 | TERMINAL | COPPER ALLOY | 16 | | | FINISH | PART NO.: USCF-16XN-4BR60 |
| 1 | HOUSING | LCP+30%GF | 1 | | | SEE NOTE | DR: Ricky 2019/10/23 CHKD: Ricky 2019/10/23 |
| NO | PARTS | MATERIAL | QTY | FINISHING | | Q'TY | DWG NO.: AII-R60 |
| | | | | | | | SCALE SHEET REV. CUSTOMER 1:1 1/1 B DRAWING |

THESE DRAWINGS AND SPECIFICATIONS ARE THE PROPERTY OF ACCURATE INNOTECH INC AND SHALL NOT BE REPRODUCED, COPIED OR USED IN ANY MANNER WITHOUT THE PRIOR WRITTEN CONSENT OF ACCURATE INNOTECH INC



雅安科技有限公司
ACCURATE INNOTECH INC.