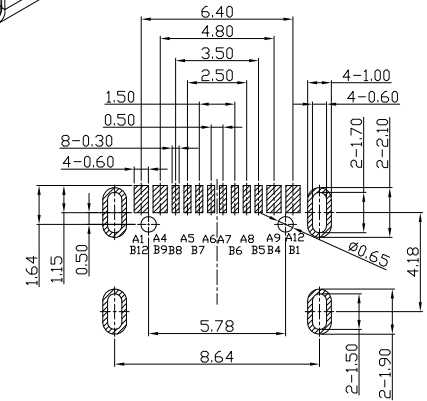
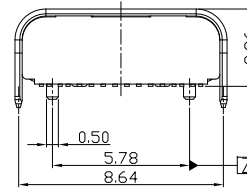
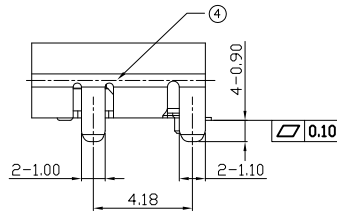
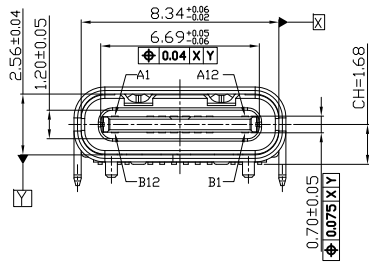
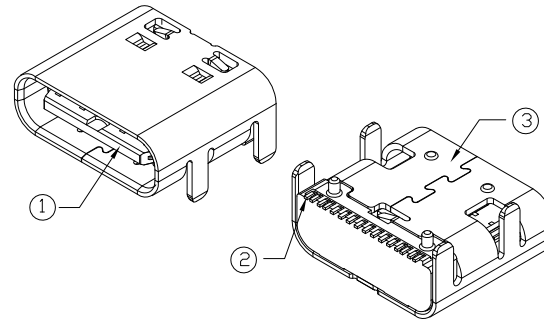
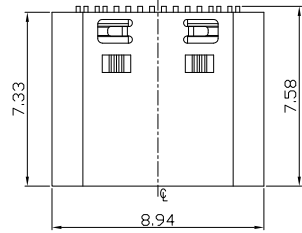




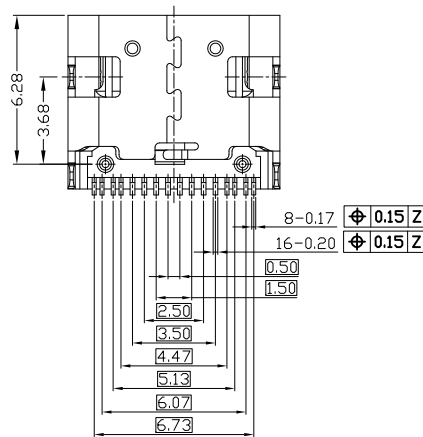
RoHS
Compliant
2002/95/EC

Halogen Free

REV.	ECN.	NO.	APPD.



RECOMMENDED PCB LAYOUT(TOP VIEW)
THICKNESS 0.80MM;DEFAULT TOLERANCE:±0.05



A1	GND	B12	GND
A4	VBUS	B9	VBUS
A5	CC1	B8	SBU2
A6	DP1	B7	DN2
A7	DN1	B6	DP2
A8	SBU1	B5	CC2
A9	VBUS	B4	VBUS
A12	GND	B1	GND
PIN	SIGNAL NAME	PIN	SIGNAL NAME

NOTES:

1.ELECTRICAL:

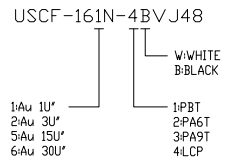
- CURRENT RATING: 3A
- INSULATION RESISTANCE: 100MΩ MIN 250V DC;
- CONTACT RESISTANCE: INITIAL 40mΩ MAX; AFTER 50mΩ MAX;
- WITHSTANDING VOLTAGE: 100V AC MIN;
- OPERATING TEMPERATURE:-40°C TO +80°C.

2.Mechanical:

- Mating Force: 5N~20N MAX.
- Unmating Force: 8N~20N(INITIAL) 6N~20N(AFTER 10000 CYCLES) MIN.
- Durability: 10,000 CYCLES.;

3.DIMENSIONS MARKED "▼"
TO BE CHECKED BY Q.C & IPQC.

4.PART NO.



6					X.	±0.38	X.*	±5°	UNITS	mm
5					.X	±0.30	.X*	±3°	MAT'L	
4	MID PLATE	STAINLESS STEEL	1		.XX	±0.20	.XX*	±1°	SEE NOTE	
3	SHELL	STAINLESS STEEL	1	PLATED NICKEL	.XXX	±0.10	.XXX*		FINISH	
2	TERMINAL	COPPER ALLOY	16	PLATED GOLD					SEE NOTE	
1	INSULATOR	LCP+30%GF	1	UL94V-0					Q'TY	
NO	PARTS	MATERIAL	QTY	FINISHING						

THESE DRAWINGS AND SPECIFICATIONS ARE THE PROPERTY OF ACCURATE INNOTECH INC AND SHALL NOT BE REPRODUCED, COPIED OR USED IN ANY MANNER WITHOUT THE PRIOR WRITTEN CONSENT OF ACCURATE INNOTECH INC

雅安科技有限公司 ACCURATE INNOTECH INC.			
TITLE: USB TYPE CF 2.0 单排16PIN L7.33mm 板上式(带柱) 板上3.26mm		PART NO.:	
DR: Ricky 2020/03/20		USCF-16XN-4BVJ48	
CHKD: Ricky 2020/03/20		DWG NO.:	
APPD:		AII-VJ48	
SCALE	SHEET	REV.	CUSTOMER
1:1	1/1	B	DRAWING