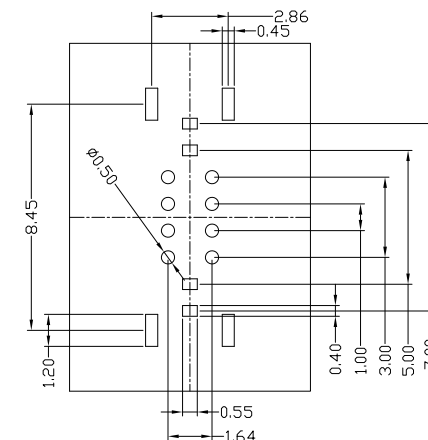
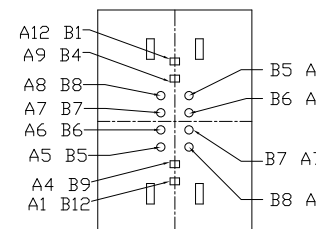
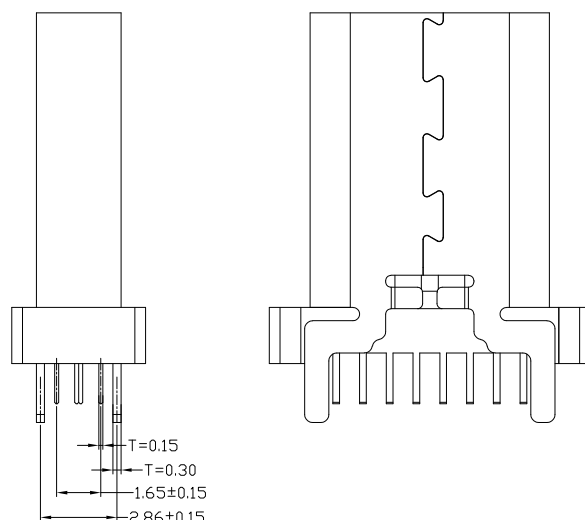
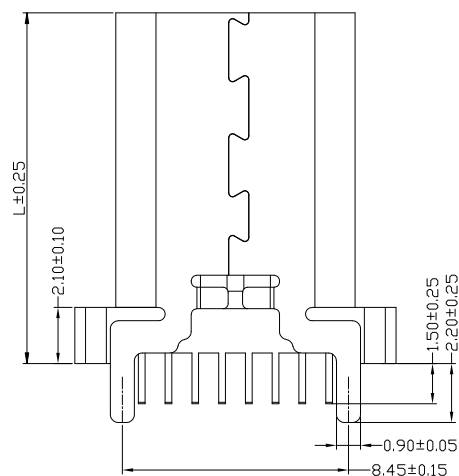
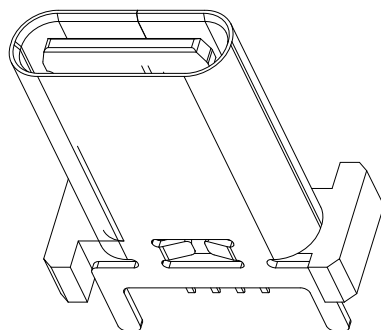
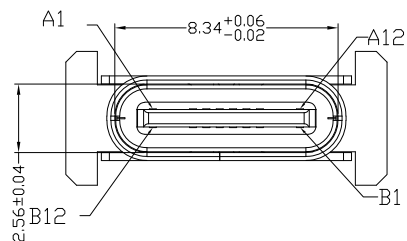


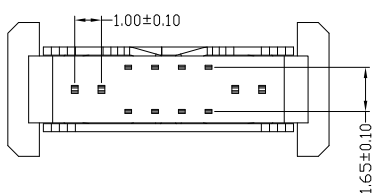


RoHS Compliant
2002/95/EC

REV.	ECN. NO.	APPD.



RECOMMENDED P.C.B. LAYOUT (T:1.00mm)
TOLERANCE UNSPECIFIED ±0.05mm



USCF-162N-4BPG50	9.3
USCF-162N-4BPG51	10.0
USCF-162N-4BPG52	10.5
USCF-162N-4BPG53	12.4
USCF-162N-4BPG54	13.1
USCF-162N-4BPG55	13.7
USCF-162N-4BPG56	15.0
USCF-162N-4BPG57	17.5
P/N:	L:mm

A1	GND	B12	GND
A4	VBUS	B9	VBUS
A5	CC1	B8	SBU2
A6	DP1	B7	DN2
A7	DN1	B6	DP2
A8	SBU1	B5	CC2
A9	VBUS	B4	VBUS
A12	GND	B1	GND
PIN	SIGNAL NAME	PIN	SIGNAL NAME

NOTES:
1.ELECTRICAL:
1) VOLTAGE CURRENT RATING: 3A, 30V DC.
2) INSULATION RESISTANCE: 100MΩ MIN. MEASURED BY 500 VDC
3) CONTACT RESISTANCE: 30mΩ MAX.
4) WITHSTANDING VOLTAGE: 100V AC FOR ONE MINUTE.
5) OPERATING TEMPERATURE: -25°C TO +85°C.
2.Mechanical:
1) Mating Force: 0.5~2.0Kgf
2) Unmating Force: 0.8~2.0Kgf
3) Durability: 10,000 cycles
3.DIMENSIONS MARKED "▼"
TO BE CHECKED BY Q.C & IPQC.

USCF-162N-4BPGX
1:Au 1U*
2:Au 3U*
5:Au 15U*
6:Au 30U*
SEE CHART
W:WHITE
B:BLACK
1:PB
2:PA6T
3:PA9T
4:LCP

Bill of materials:

5	SHELL	STAINLESS STEEL	1	PLATED NICKEL	X. ±0.50	X.* ±2°	UNITS	mm
4	SHIELDING PLATE	STAINLESS STEEL	1		.X ±0.10	.X* ±1°	MAT'L	
3	MD	LCP+30%GF	1	UL94V-0	.XX ±0.05		SEE NOTE	
2	CONTACT	COPPER ALLOY	16	PLATED GOLD	.XXX ±0.02		FINISH	
1	HOUSING	LCP+30%GF	1	UL94V-0			SEE NOTE	
NO	PARTS	MATERIAL	QTY	FINISHING	THESE DRAWINGS AND SPECIFICATIONS ARE THE PROPERTY OF ACCURATE INNOTECH INC AND SHALL NOT BE REPRODUCED, COPIED OR USED IN ANY MANNER WITHOUT THE PRIOR WRITTEN CONSENT OF ACCURATE INNOTECH INC		Q'TY	

雅安科技有限公司 ACCURATE INNOTECH INC.			
TITLE: USB TYPE CF 16P 立式插板		PART NO.: USCF-162N-4BPG50~7	
DR: <i>Ricky</i> 2021/07/16		DWG NO.: AII-PG50~7	
CHKD: <i>Ricky</i> 2021/07/16		SCALE	SHEET
APPD:	1:1	1/1	REV. B
			CUSTOMER DRAWING