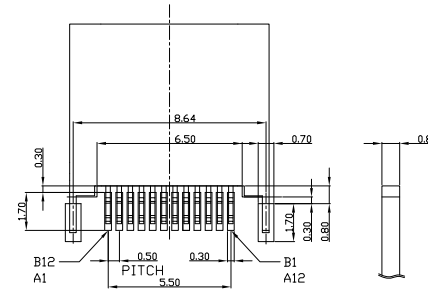
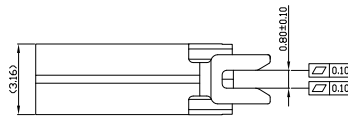
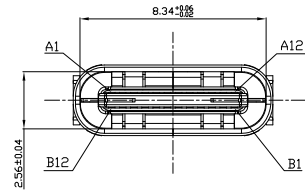
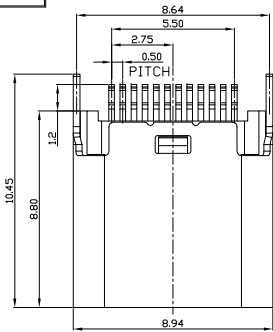


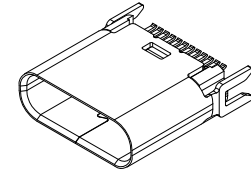


RoHS
Compliant
2002/95/EC

| REV. | ECN. | NO. | APPD. |
|------|------|-----|-------|
| | | | |
| | | | |



RECOMMENDED P.C.B. LAYOUT
TOLERANCE UNSPECIFIED ±0.05mm



USB TYPE-C FULL-FEATURED
RECEPTACLE INTERFACE PIN ASSIGNMENTS

| PIN | Signal Name | PIN | Signal Name |
|-----|-------------|-----|-------------|
| A1 | GND | B12 | GND |
| A2 | SSTXp1 | B11 | SSRXp1 |
| A3 | SSTXn1 | B10 | SSRXn1 |
| A4 | VBUS | B9 | VBUS |
| A5 | CC1 | B8 | SBU2 |
| A6 | Dp1 | B7 | Dn2 |
| A7 | Dn1 | B6 | Dp2 |
| A8 | SBU1 | B5 | CC2 |
| A9 | VBUS | B4 | VBUS |
| A10 | SSRXn2 | B3 | SSTXn2 |
| A11 | SSRXp2 | B2 | SSTXp2 |
| A12 | GND | B1 | GND |

- NOTES:
- ELECTRICAL CHARACTERISTICS:
 - CURRENT RATING: 5A FOR VBUS; 1.25A FOR GND PIN; 0.25A FOR OTHER PIN.
 - INSULATION RESISTANCE: 100MΩ Min
 - CONTACT RESISTANCE: 40mΩ Max.
 - WITHSTANDING VOLTAGE: 100V AC R.M.S.
 - OPERATING TEMPERATURE: -55°C ~ 85°C
 - MECHANICAL CHARACTERISTICS:
 - MATING FORCE: 5N~20N
 - UNMATED FORCE: 8N~20N AFTER TEST
 - DURABILITY: 10,000 CYCLES
 - DIMENSIONS MARKED "▼"
TO BE CHECKED BY Q.C & IPQC.

USCF-241N-4BHF15

- 1:1Au 1U'
- 2:2Au 3U'
- 5:5Au 15U'
- 6:6Au 30U'
- W:WHITE
- B:BLACK
- 1:PBT
- 2:PA6T
- 3:PA9T
- 4:LCP

Bill of materials:

| NO | PARTS | MATERIAL | QTY | FINISHING | X. | ±0.50 | X.* | ±3' | UNITS | mm | 雅安科技有限公司 ACCURATE INNOTECH INC. | | | | | | |
|----|---------|-----------------|-----|-----------------|------|-------|-------|-----|----------|----|------------------------------------|------------------|--|----------|-------|------|----------|
| 4 | SHIELD | STAINLESS STEEL | 1 | | .X | ±0.35 | .X* | | MAT'L | | TITLE: | PART NO.: | | | | | |
| 3 | SHELL | STAINLESS STEEL | 1 | PLATED NICKEL | .XX | ±0.25 | .XX* | | SEE NOTE | | USB 3.1 CF 夹板式0.8 II=8.8 | USCF-24XN-4BHF15 | | | | | |
| 2 | CONTACT | COPPER ALLOY | 24 | PLATED GOLD/TIN | .XXX | ±0.10 | .XXX* | | FINISH | | DR: | Ricky 2020/03/27 | | DWG NO.: | | | |
| 1 | MOLDING | LCP+30%GF | 1 | UL94V-0 | | | | | SEE NOTE | | CHKD: | Ricky 2020/03/27 | | AII-HF15 | | | |
| | | | | | | | | | Q'TY | | APPD: | | | SCALE | SHEET | REV. | CUSTOMER |
| | | | | | | | | | | | | | | 1:1 | 1/1 | B | DRAWING |

THESE DRAWINGS AND SPECIFICATIONS ARE THE PROPERTY OF ACCURATE INNOTECH INC. AND SHALL NOT BE REPRODUCED, COPIED OR USED IN ANY MANNER WITHOUT THE PRIOR WRITTEN CONSENT OF ACCURATE INNOTECH INC.

