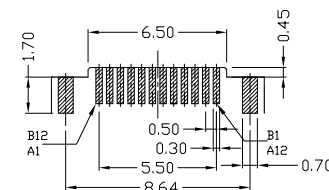
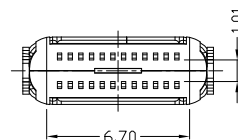
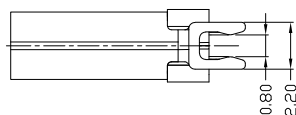
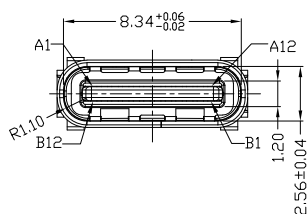
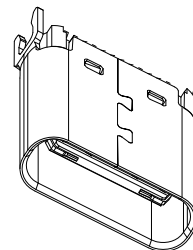
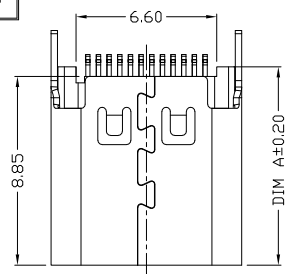


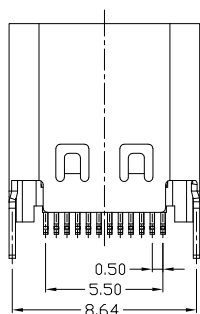


RoHS Compliant
2002/95/EC

REV.	ECN.	NO.	APPD.



RECOMMENDED P.C.B. LAYOUT (T:1.00mm)
TOLERANCE UNSPECIFIED ±0.05mm



A1	GND	B12	GND
A2	SSTXP1	B11	SSRXP1
A3	SSTXN1	B10	SSRXN1
A4	VBUS	B9	VBUS
A5	CC1	B8	SBU2
A6	DP1	B7	DN2
A7	DN1	B6	DP2
A8	SBU1	B5	CC2
A9	VBUS	B4	VBUS
A10	SSRXN2	B3	SSTXN2
A11	SSRXP2	B2	SSTXP2
A12	GND	B1	GND
PIN	SIGNAL NAME	PIN	SIGNAL NAME

NOTES:

1.ELECTRICAL:

- 1)VOLEAGE CURRENT RATING: 3.0A 5.0V
- 2)INSULATION RESISTANCE: 100MΩ MIN.
- 3)CONTACT RESISTANCE:
LLCR:VBUS & GND PINS AND OTHER PINS: 40mΩ/PIN MAX.
SHIELD:50mΩ/MAX.
LLCR MAX. CHANGE OF ALL PINS: 10mΩ.
- 4)WITHSTANDING VOLTAGE: AC 100V FOR 1 MINUTE.
- 5)OPERATING TEMPERATURE: -25°C ~ 85°C

2.MECHANICAL:

- 1)MATING FORCE: 5N~20N.
- 2)UNMATED FORCE: 8N~20N.
- 3)DURABILITY: 10,000 CYCLES.

**3.DIMENSIONS MARKED "▼"
TO BE CHECKED BY Q.C & IPQC.**

4.PART NO.

USCF-241N-4BHS6X

DIM A	P/N:
9.30	USCF-241N-4BHS60
10.00	USCF-241N-4BHS61
10.50	USCF-241N-4BHS62

1Au 10"
2Au 30"
5Au 15u"
6Au 30u"

SEE CHART

W/WHITE
B/BLACK

1PBT
2PA6T
3PA9T
4LCP

6					X.	±0.25	X.'	±3'	UNITS	mm	雅安科技有限公司 ACCURATE INNOTECH INC. TITLE: USB TYPE CF 24P 夹板式 0.8 H=9.3&10.0&10.5 PART NO.: USCF-24XN-4BHS60&1&2 DR: <i>Ricky</i> 2022/09/06 DWG NO.: AII-HS60&1&2 DWG NO.: AII-HS60&1&2 SCALE SHEET REV. CUSTOMER 1:1 1/1 B DRAWING
5	EMI PLATE	STAINLESS STEEL	1		.X	±0.20	.X'	±2'	MAT'L		
4	FRONT SHELL	STAINLESS STEEL	1	PLATED NICKEL	.XX	±0.15	.XX'	±1'	SEE NOTE		
3	MID PLATE	STAINLESS STEEL	1		.XXX	±0.08			FINISH		
2	CONTACT	COPPER ALLOY	24	PLATED GOLD/TIN					SEE NOTE		
1	HOUSING	LCP+30%GF	1	UL94V-0					Q'TY		
NO	PARTS	MATERIAL	QTY	FINISHING							

THESE DRAWINGS AND SPECIFICATIONS ARE THE PROPERTY OF ACCURATE INNOTECH INC AND SHALL NOT BE REPRODUCED, COPIED OR USED IN ANY MANNER WITHOUT THE PRIOR WRITTEN CONSENT OF ACCURATE INNOTECH INC

