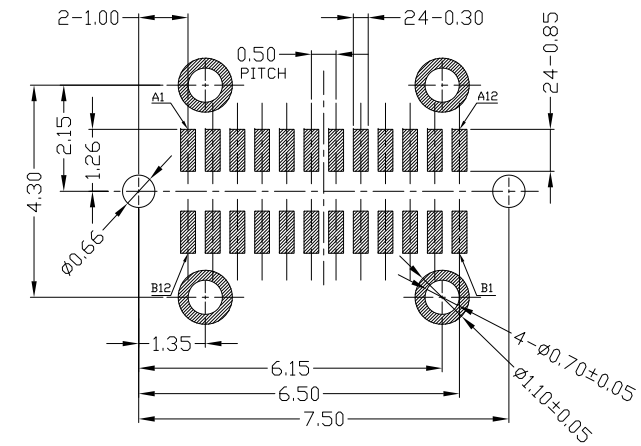
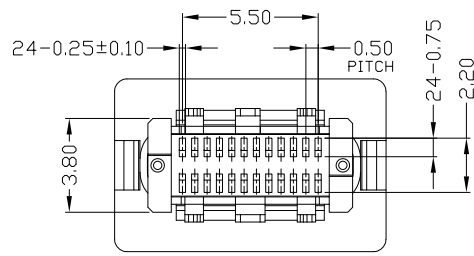
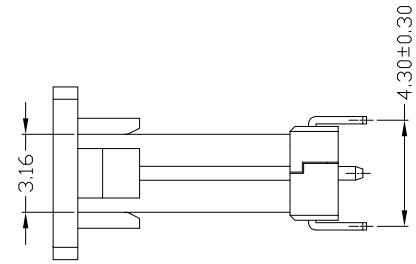
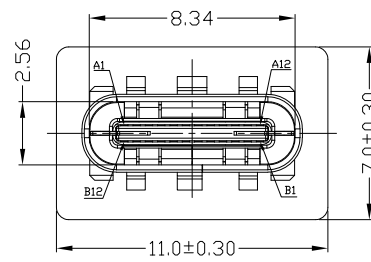
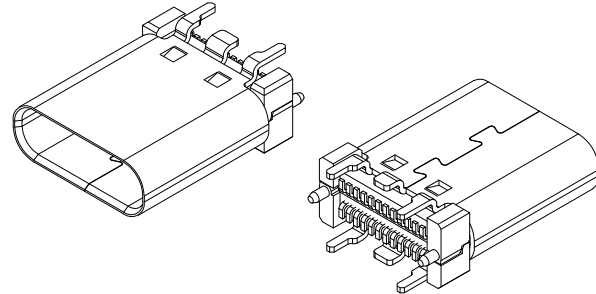
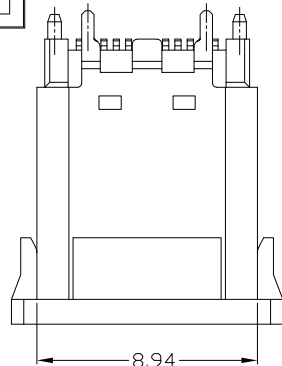


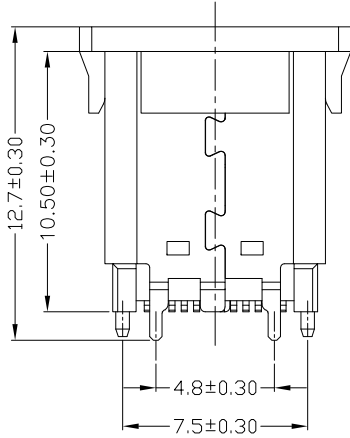


RoHS
Compliant
2002/95/EC

REV.	ECN.	NO.	APPD.



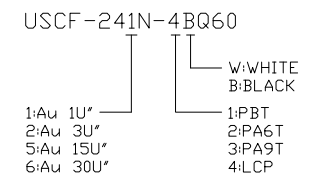
RECOMMENDED P.C.B. LAYOUT (T:1.00mm)
TOLERANCE UNSPECIFIED \pm 0.05mm
SCALE: 2:1



A1	GND	B12	GND
A2	SSTXP1	B11	SSRXP1
A3	SSTXN1	B10	SSRXN1
A4	VBUS	B9	VBUS
A5	CC1	B8	SBU2
A6	DP1	B7	DN2
A7	DN1	B6	DP2
A8	SBU1	B5	CC2
A9	VBUS	B4	VBUS
A10	SSRXN2	B3	SSTXN2
A11	SSRXP2	B2	SSTXP2
A12	GND	B1	GND
PIN	SIGNAL NAME	PIN	SIGNAL NAME

NOTES:

- ELECTRICAL:
 - CURRENT RATING: 3A MIN FOR VBUS; VOLTAGE: 5VAC MAX 0.25A MIN FOR OTHER.
 - INSULATION RESISTANCE: 100M Ω MIN 250V DC;
 - CONTACT RESISTANCE: 40m Ω MAX;
 - WITHSTANDING VOLTAGE: 100V AC;
 - OPERATING TEMPERATURE: -25 $^{\circ}$ C TO +80 $^{\circ}$ C.
- Mechanical:
 - MATING FORCE: 5N~20N MAX.
 - UNMATING FORCE: 8N~20N(INITIAL) 6N~20N(AFTER 10000 CYCLES) MIN.
 - DURABILITY: 10,000 CYCLES.
- DIMENSIONS MARKED "▼" TO BE CHECKED BY Q.C & IPQC.



Bill of materials:

6	CAP	LCP+30%GF	1	UL94V-0	.X	\pm 0.30	.X*	\pm 1*	UNITS	mm
5	SHRAPNEL	STAINLESS STEEL	1		.XX	\pm 0.20	.XX*		MAT'L	
4	SHIELDING PLATE	STAINLESS STEEL	1		.XXX	\pm 0.10	.XXX*		SEE NOTE	
3	SHELL	STAINLESS STEEL	1	PLATED NICKEL					FINISH	
2	TERMINAL	COPPER ALLOY	24	PLATED GOLD/TIN					SEE NOTE	
1	HOUSING	LCP+30%GF	1	UL94V-0					Q'TY	
NO	PARTS	MATERIAL	QTY	FINISHING						

THESE DRAWINGS AND SPECIFICATIONS ARE THE PROPERTY OF ACCURATE INNOTECH INC AND SHALL NOT BE REPRODUCED, COPIED OR USED IN ANY MANNER WITHOUT THE PRIOR WRITTEN CONSENT OF ACCURATE INNOTECH INC.

雅安科技有限公司
ACCURATE INNOTECH INC.

TITLE: USB TYPE CF 直立式SMT 长10.5mm
PART NO.: USCF-24XN-4BQ60

DR: Ricky 2021/08/28
DWG NO.: AII-Q60

CHKD: Ricky 2021/08/28
SCALE: 1:1 SHEET: 1/1 REV: B CUSTOMER DRAWING

APPD: