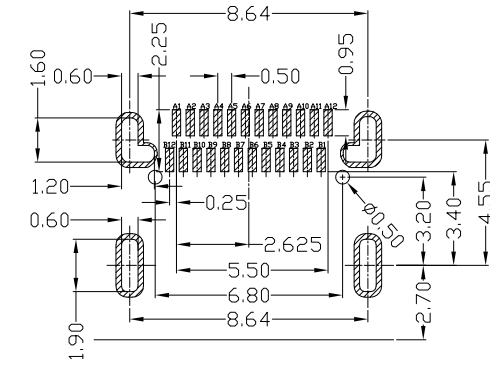
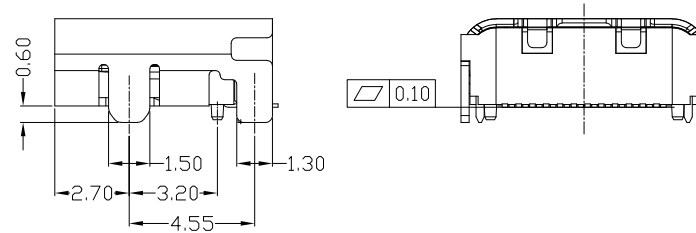
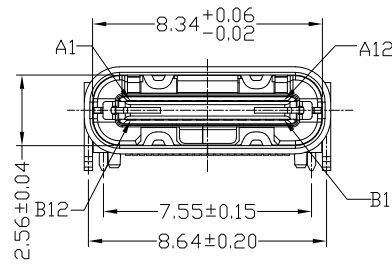
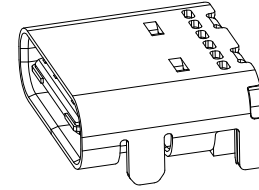
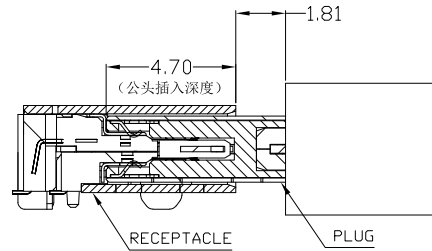
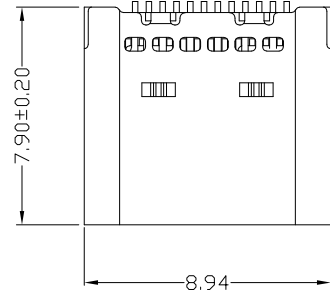


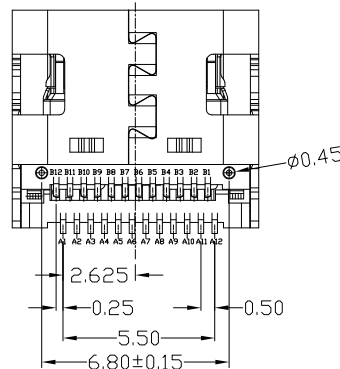


RoHS  
Compliant  
2002/95/EC

| REV. | ECN. | NO. | APPD. |
|------|------|-----|-------|
|      |      |     |       |
|      |      |     |       |
|      |      |     |       |



RECOMMENDED P.C.B. LAYOUT  
TOLERANCE UNSPECIFIED ±0.05mm



|     |             |     |             |
|-----|-------------|-----|-------------|
| A1  | GND         | B12 | GND         |
| A2  | SSTXP1      | B11 | SSRXP1      |
| A3  | SSTXN1      | B10 | SSRXN1      |
| A4  | VBUS        | B9  | VBUS        |
| A5  | CC1         | B8  | SBU2        |
| A6  | DP1         | B7  | DN2         |
| A7  | DN1         | B6  | DP2         |
| A8  | SBU1        | B5  | CC2         |
| A9  | VBUS        | B4  | VBUS        |
| A10 | SSRXN2      | B3  | SSTXN2      |
| A11 | SSRXP2      | B2  | SSTXP2      |
| A12 | GND         | B1  | GND         |
| PIN | SIGNAL NAME | PIN | SIGNAL NAME |

NOTES:

1.ELECTRICAL:

- CURRENT RATING: 3A FOR VBUS; 1.25A FOR VCONN; 0.25A FOR OTHER.
- INSULATION RESISTANCE: 100MΩ MIN
- CONTACT RESISTANCE: 40mΩ MAX
- WITHSTANDING VOLTAGE: 100V AC;
- OPERATING TEMPERATURE: -25°C TO +80°C.

2.MECHANICAL:

- MATING FORCE: 5N~20N
- UNMATING FORCE: 8N~20N(INITIAL) 6N~20N (AFTER 10,000 CYCLES)
- DURABILITY: 10,000 CYCLES

3.DIMENSIONS MARKED "▼" TO BE CHECKED BY Q.C & IPQC.

4. PART NO.

USCF-241N-4BV64

|          |         |
|----------|---------|
| 1Au 1U'  | W:WHITE |
| 2Au 3U'  | B:BLACK |
| 5Au 15U' | 1PB-T   |
| 6Au 30U' | 2PA6T   |
|          | 3PA9T   |
|          | 4LCP    |

Bill of materials:

| NO | PARTS    | MATERIAL        | QTY | FINISHING          | .X ±0.30   | X.' ±3' | UNITS mm | 雅安科技有限公司<br>ACCURATE INNOTECH INC. |       |      |                  |                              |
|----|----------|-----------------|-----|--------------------|------------|---------|----------|------------------------------------|-------|------|------------------|------------------------------|
| 5  | SHRAPNEL | STAINLESS STEEL | 1   |                    | .XX ±0.20  |         | MAT'L    | TITLE:<br>USB CF TYPE 双排 SMT 有柱    |       |      |                  |                              |
| 4  | HOOK     | STAINLESS STEEL | 1   | PLATED TIN         | .XXX ±0.10 |         | SEE NOTE |                                    |       |      |                  | PART NO.:<br>USCF-24*N-4BV64 |
| 3  | SHELL    | STAINLESS STEEL | 1   | PLATED NICKEL      |            |         | FINISH   | DR: Ricky 2023/11/03               |       |      |                  |                              |
| 2  | TERMINAL | COPPER ALLOY    | 24  | PLATED GOLD/NICKEL |            |         | SEE NOTE | DWG NO.:<br>AII-V64                |       |      |                  |                              |
| 1  | HOUSING  | LCP+30%GF       | 1   | UL94V-0            |            |         | Q'TY     | CHKD: Ricky 2023/11/03             |       |      |                  |                              |
|    |          |                 |     |                    |            |         |          | APPD:                              |       |      |                  |                              |
|    |          |                 |     |                    |            |         |          | SCALE                              | SHEET | REV. | CUSTOMER DRAWING |                              |
|    |          |                 |     |                    |            |         |          | 1:1                                | 1/1   | B    |                  |                              |

THESE DRAWINGS AND SPECIFICATIONS ARE THE PROPERTY OF ACCURATE INNOTECH INC AND SHALL NOT BE REPRODUCED, COPIED OR USED IN ANY MANNER WITHOUT THE PRIOR WRITTEN CONSENT OF ACCURATE INNOTECH INC.

