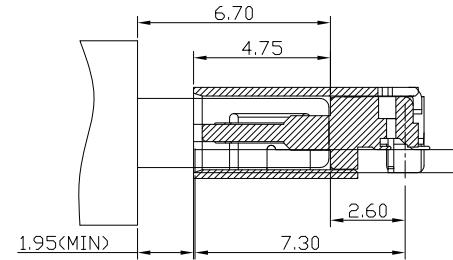
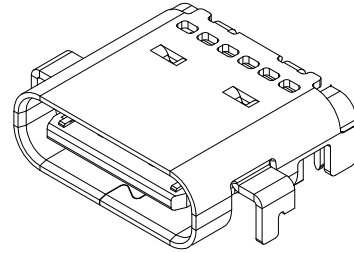
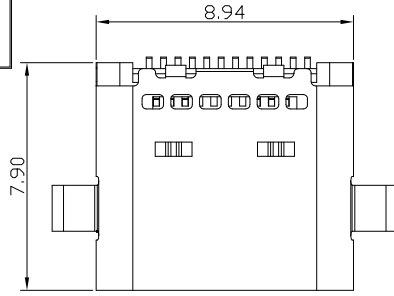


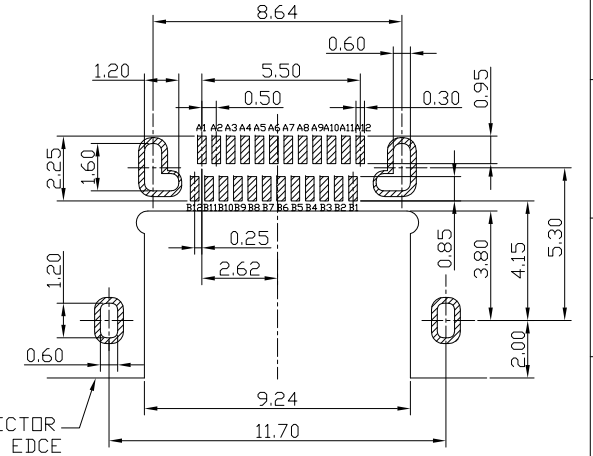
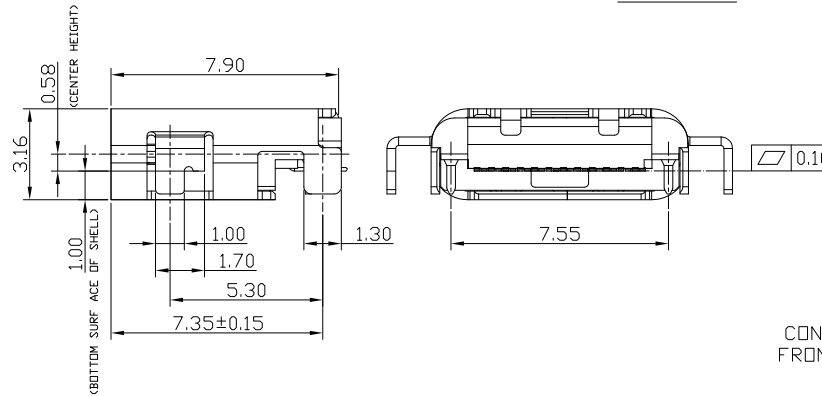
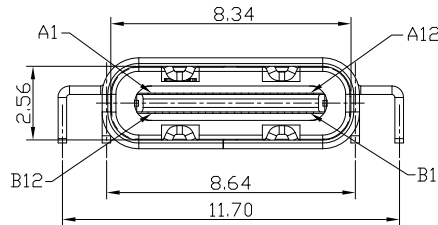


RoHS
Compliant
2002/95/EC

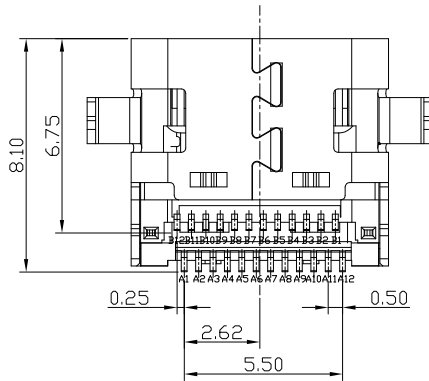
REV.	ECN.	NO.	APPD.



SECTION A-A



RECOMMENDED P.C.B. LAYOUT
TOLERANCE UNSPECIFIED ±0.05mm



A1	GND	B12	GND
A2	SSTXP1	B11	SSRXP1
A3	SSTXN1	B10	SSRXN1
A4	VBUS	B9	VBUS
A5	CC1	B8	SBU2
A6	DP1	B7	DN2
A7	DN1	B6	DP2
A8	SBU1	B5	CC2
A9	VBUS	B4	VBUS
A10	SSRXN2	B3	SSTXN2
A11	SSRXP2	B2	SSTXP2
A12	GND	B1	GND
PIN	SIGNAL NAME	PIN	SIGNAL NAME

1.ELECTRICAL:

- CURRENT RATING: 5A FOR VBUS PIN;
1.25A FOR VCONN PIN.
- INSULATION RESISTANCE: 100MΩ MIN
- CONTACT RESISTANCE: 40mΩ MAX FOR INITIAL.
10mΩ CHANGE AFTER TEST. MEASURE AT 20mV, 100mA.
- WITHSTANDING VOLTAGE: 100V AC R.M.S.
- OPERATING TEMPERATURE: -25°C TO +85°C.

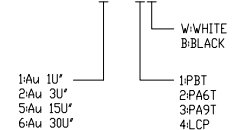
2.MECHANICAL:

- MATING FORCE: 5N~20N.
- UNMATED FORCE: 8N~20N AFTER TEST
- DURABILITY: 10,000 CYCLES

3.DIMENSIONS MARKED "▼"
TO BE CHECKED BY Q.C & IPQC.

4.PART NO.

USCF-241N-4BVW03



6				.X	±0.30	.X'	±1'	UNITS	mm
5	SHRAPNEL	STAINLESS STEEL	1	.XX	±0.20	.XX'	±0.5'	MAT'L	
4	HOOK	STAINLESS STEEL	1	.XXX	±0.10	.XXX'	±0.2'	SEE NOTE	
3	SHELL	STAINLESS STEEL	1					FINISH	
2	CONTACT	COPPER ALLOY	24					SEE NOTE	
1	INSULATOR	LCP+30%GF	1					Q'TY	
NO	PARTS	MATERIAL	QTY						

THESE DRAWINGS AND SPECIFICATIONS ARE THE PROPERTY OF ACCURATE INNOTECH INC AND SHALL NOT BE REPRODUCED, COPIED OR USED IN ANY MANNER WITHOUT THE PRIOR WRITTEN CONSENT OF ACCURATE INNOTECH INC

雅安科技有限公司
ACCURATE INNOTECH INC.

TITLE: USB 3.1 TYPE CF 24P 双排SMT
沉板0.0mm 脚距1.7mm L=7.9

PART NO.: USCF-24XN-4BVW03

DR: Ricky 2022/05/16

CHKD: Ricky 2022/05/16

APPD:

DWG NO.: AII-VW03

SCALE: 1:1 SHEET: 1/1 REV.: B CUSTOMER DRAWING