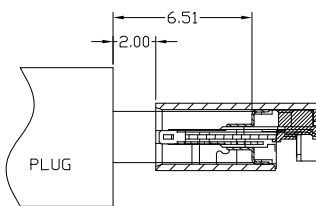
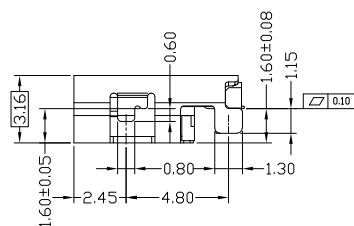
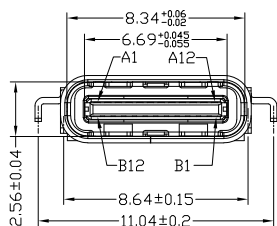
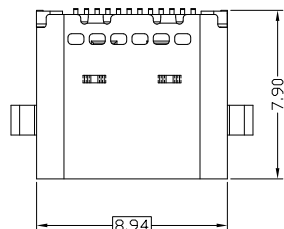


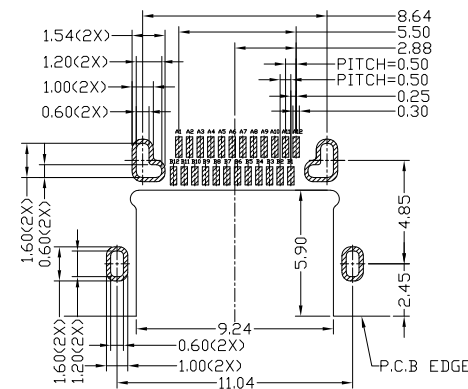


RoHS Compliant
2002/95/EC

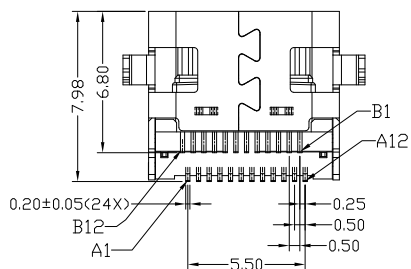
REV.	ECN.	NO.	APPD.



AFTER MATING



RECOMMENDED PCB LAYOUT(TOP VIEW)
THICKNESS 0.60MM;DEFAULT TOLERANCE:±0.05



USB TYPE-C PIN ASSIGNMENTS

PIN NUMBER	SIGNAL NAME	PIN NUMBER	SIGNAL NAME
A1	GND	B12	GND
A2	SSTXp1	B11	SSRXp1
A3	SSTXn1	B10	SSRXn1
A4	Vbus	B9	Vbus
A5	CC1	B8	SBU2
A6	D+	B7	D-
A7	D-	B6	D+
A8	SBU1	B5	CC2
A9	Vbus	B4	Vbus
A10	SSRXn2	B3	SSTXn2
A11	SSRXp2	B2	SSTXp2
A12	GND	B1	GND

NOTES:

- ELECTRICAL:
 - VOLGATE CURRENT RATING: 5A, 30V DC.
 - INSULATION RESISTANCE: 100MΩ MIN. 150V DC
 - CONTACT RESISTANCE: 40mΩ MAX.
 - WITHSTANDING VOLTAGE: 150V AC / 1mA MAX.
 - OPERATING TEMPERATURE: -40°C TO +85°C.
- MECHANICAL:
 - MATING FORCE: 5N~20N MAX.
 - UNMATING FORCE: 8N~20N(INITIAL) 6N(AFTER 10,000 CYCLES) MIN.
 - DURABILITY: 10,000 CYCLES
- DIMENSIONS MARKED "▼"
TO BE CHECKED BY Q.C & IPQC.

4.PART NO.

USCF-242N-4BVG505

1Au 1U*
2Au 3U*
5Au 15U*
6Au 30U*
1PBT
2PA6T
3PA9T
4LCP

6				X.	±0.25	X.*	±2*	UNITS	mm
5	HOOK	STAINLESS STEEL	1	.X	±0.20	X.X*	±1*	MAT'L	
4	SHRAPNEL	STAINLESS STEEL	1	.XX	±0.15			SEE NOTE	
3	SHELL	STAINLESS STEEL	1	.XXX	±0.10			FINISH	
2	CONTACT	COPPER ALLOY	24					SEE NOTE	
1	HOUSING	LCP+30%GF	1					Q'TY	
NO	PARTS	MATERIAL	QTY						

THESE DRAWINGS AND SPECIFICATIONS ARE THE PROPERTY OF ACCURATE INNOTECH INC AND SHALL NOT BE REPRODUCED, COPIED OR USED IN ANY MANNER WITHOUT THE PRIOR WRITTEN CONSENT OF ACCURATE INNOTECH INC



雅安科技有限公司 ACCURATE INNOTECH INC.			
TITLE: USB TYPE CF 24P 沉板L.6 双贴L=7.9		PART NO.: USCF-24XN-4BVG505	
DR: Ricky 2022/08/18		DWG NO.: AII-VG505	
CHKD: Ricky 2022/08/18		SCALE	SHEET
APPD:	REV. B	1:1	1/1
CUSTOMER DRAWING			