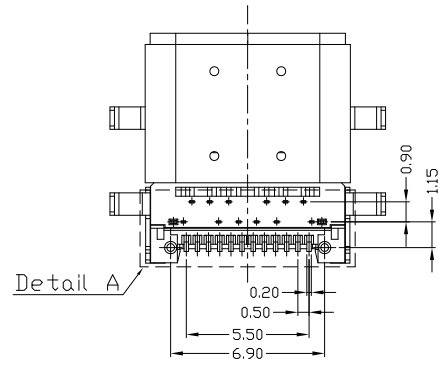
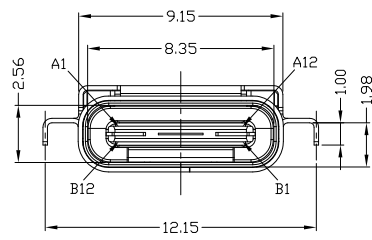
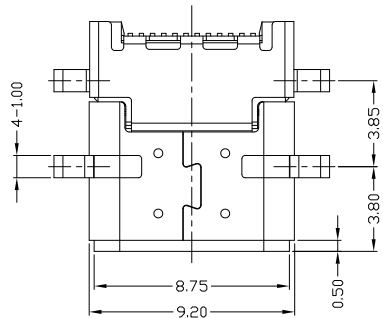


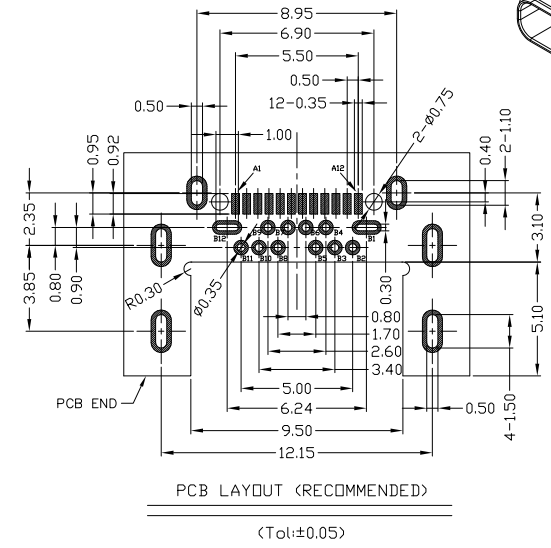
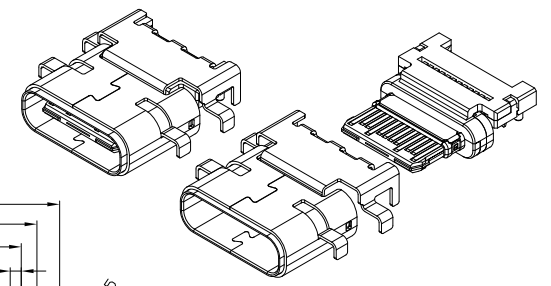
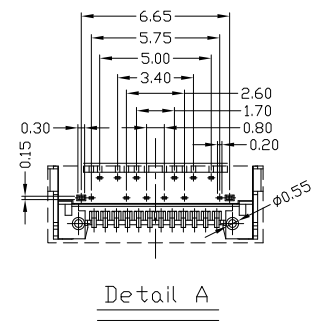
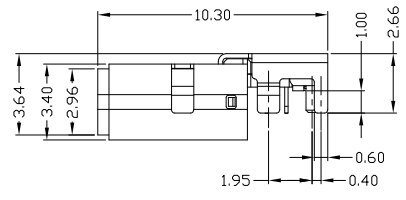


RoHS
Compliant
2002/95/EC

| REV. | ECN. | NO. | APPD. |
|------|------|-----|-------|
| | | | |
| | | | |



| PIN | Signal Name | PIN | Signal Name |
|-----|-------------|-----|-------------|
| A1 | GND | B12 | GND |
| A2 | SSTXp1 | B11 | SSRXp1 |
| A3 | SSTXn1 | B10 | SSRXn1 |
| A4 | VBUS | B9 | VBUS |
| A5 | CC1 | B8 | SBU2 |
| A6 | Dp1 | B7 | Dn2 |
| A7 | Dn1 | B6 | Dp2 |
| A8 | SBU1 | B5 | CC2 |
| A9 | VBUS | B4 | VBUS |
| A10 | SSRXn2 | B3 | SSTXn2 |
| A11 | SSRXp2 | B2 | SSTXp2 |
| A12 | GND | B1 | GND |



NOTES:

- ELECTRICAL:
 - CURRENT RATING:1.5AMP;
 - INSULATION RESISTANCE: 100MΩ MIN;
 - CONTACT RESISTANCE: 40mΩ MAX;
 - WITHSTANDING VOLTAGE: 100V AC;
 - OPERATING TEMPERATURE:-30°C TO +80°C.
- Mechanical:
 - Mating Force: 5~20N MAX.
 - Unmating Force: 8~20N MIN.
 - Durability: 10000 cycles MIN.
- DIMENSIONS MARKED "▼" TO BE CHECKED BY Q.C & IPQC.

4. PART NO.

- USCF-246N-4BVH06
- 1Au 1U*
 - 2Au 3U*
 - 5Au 15U*
 - 6Au 30U*
 - W-WHITE
 - B-BLACK
 - 1PBT
 - 2PA6T
 - 3PA9T
 - 4LCP

Bill of materials:

| NO | PARTS | MATERIAL | QTY | FINISHING |
|----|----------|---------------------------|-----|-------------------|
| 6 | SHRAPNEL | STAINLESS STEEL | 1 | PLATED NICKEL |
| 5 | HOOK | STAINLESS STEEL | 1 | PLATED NICKEL |
| 4 | SHELL-2 | STAINLESS STEEL | 1 | PLATED NICKEL/TIN |
| 3 | SHELL-1 | STAINLESS STEEL | 1 | PLATED NICKEL/TIN |
| 2 | TERMINAL | COPPER ALLOY | 24 | PLATED GOLD/TIN |
| 1 | HOUSING | SYNTHETIC RESIN LCP+30%GF | 1 | UL94V-0 |

THESE DRAWINGS AND SPECIFICATIONS ARE THE PROPERTY OF ACCURATE INNOTECH INC. AND SHALL NOT BE REPRODUCED, COPIED OR USED IN ANY MANNER WITHOUT THE PRIOR WRITTEN CONSENT OF ACCURATE INNOTECH INC.



| | | | |
|-------------|-------------------------|--|-------------------------------|
| UNITS mm | | 雅安科技有限公司 ACCURATE INNOTECH INC. | |
| | | TITLE: USB CF TYPE L=10.3 沉板 前插后贴 双壳 | PART NO.: USCF-246N-4BVH06 |
| SEE NOTE | DR: gan 2018/06/23 | DWG NO.: AII-VH06 | |
| SEE NOTE | CHKD: gan 2018/06/23 | SCALE | SHEET |
| Q'TY | APPD: | 1:1 | 1/1 |
| | | REV. | CUSTOMER DRAWING |
| | | B | |