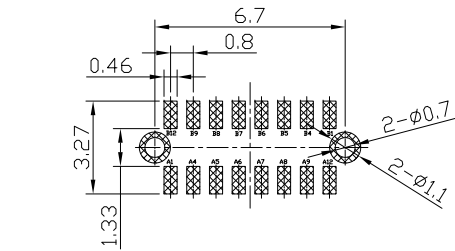
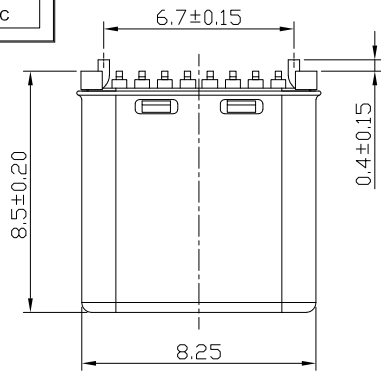


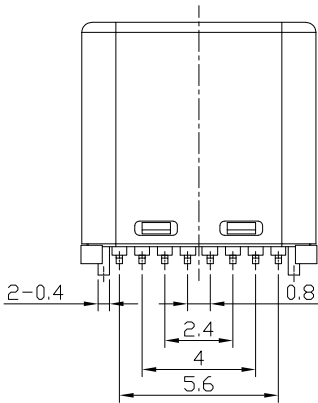
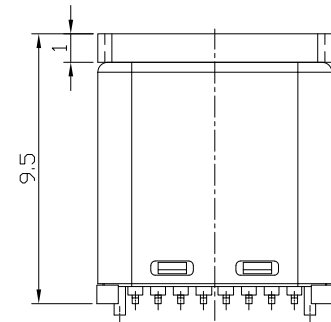
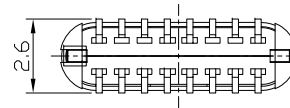
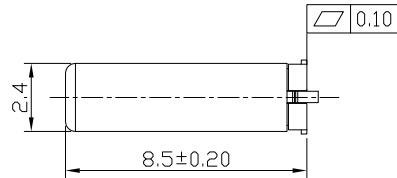
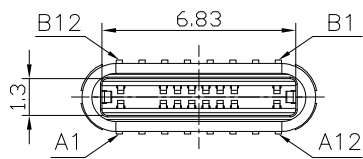
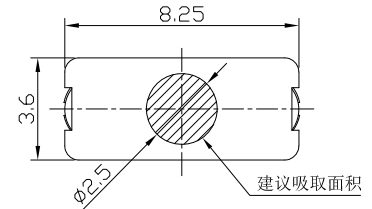
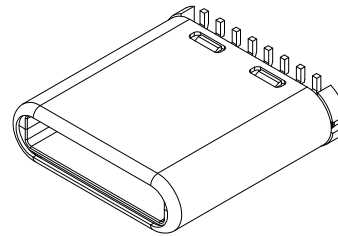


RoHS
Compliant
2002/95/EC

REV.	ECN.	NO.	APPD.



PCB HOLES(TOP VIEW)
NOTE:GENERAL TOLERANCE:±0.05mm



USB TYPE C PIN ASSIGNMENTS

PIN NUMBER	SIGNAL NAME	PIN NUMBER	SIGNAL NAME
A1	GND	B12	GND
A4	VBUS	B9	VBUS
A5	CC1	B8	SUB2
A6	Dp1	B7	Dn2
A7	Dn1	B6	Dp2
A8	SBU1	B5	CC2
A9	VBUS	B4	VBUS
A12	GND	B1	GND

NOTES:

1.ELECTRICAL:

- 1)CURRENT RATING: 3.0A
- 2)INSULATION RESISTANCE: 100MΩ MIN
- 3)CONTACT RESISTANCE: LLCR:VBUS & GND PINS AND OTHER PINS: 40mΩ/PIN MAX.SHIELD: 50mΩ/MAX.
- 4)WITHSTANDING VOLTAGE: AC 100V FOR 1 MINUTE.
- 5)OPERATING TEMPERATURE: -25°C TO +85°C.

2.MECHANICAL:

- 1)MATING FORCE: 5N~20N.
- 2)UNMATING FORCE: 8N~20N.
- 3)DURABILITY: 10,000 CYCLES

3.DIMENSIONS MARKED "▼" TO BE CHECKED BY Q.C & IPQC.

USCM-161N-4BQG60

- 1Au 1U'
- 2Au 3U'
- 5Au 15U'
- 6Au 30U'
- W:WHITE
- B:BLACK
- 1PBT
- 2PA6T
- 3PA9T
- 4LCP

Bill of materials:

NO	PARTS	MATERIAL	QTY	FINISHING	X.	±0.25	X.'	±5'	UNITS	mm	雅安科技有限公司 ACCURATE INNOTECH INC.			
6					X.	±0.25	X.'	±5'	MAT'L		TITLE: USB TYPE CM 直立式16P SMT H=8.5 PART NO.: USCM-16XN-4BQG60			
5	CAP	LCP+30%GF	1	UL94V-0	.X	±0.20	.X'	±2'	SEE NOTE					
4	HOOK	STAINLESS STEEL	1	PLATED TIN	.XX	±0.15	.XX'	±1'	FINISH		SCALE SHEET REV. CUSTOMER 1:1 1/1 B DRAWING			
3	SHELL	STAINLESS STEEL	1	PLATED NICKEL	.XXX	±0.05	.XX'	±0.5'	SEE NOTE		THESE DRAWINGS AND SPECIFICATIONS ARE THE PROPERTY OF ACCURATE INNOTECH INC AND SHALL NOT BE REPRODUCED, COPIED OR USED IN ANY MANNER WITHOUT THE PRIOR WRITTEN CONSENT OF ACCURATE INNOTECH INC.			
2	TERMINAL	COPPER ALLOY	16	PLATED GOLD/TIN										
1	HOUSING	LCP+30%GF	1	UL94V-0					Q'TY		APPD:			
											BY Q.C & IPQC.			