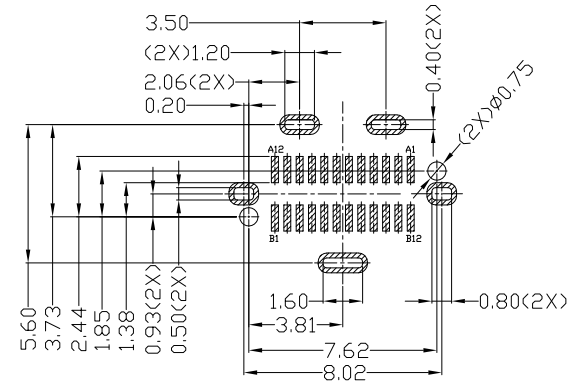
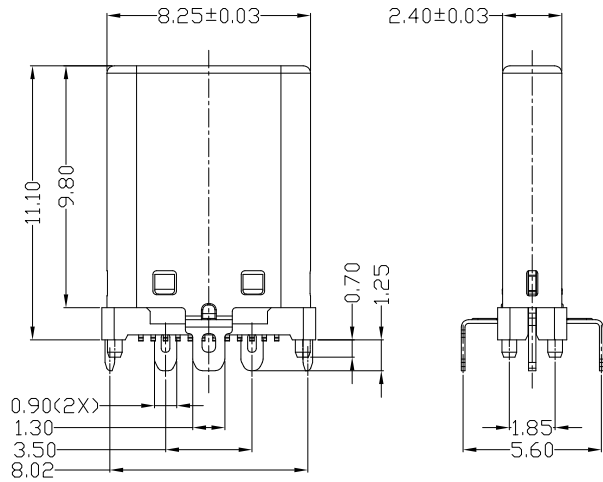
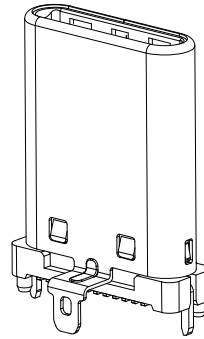
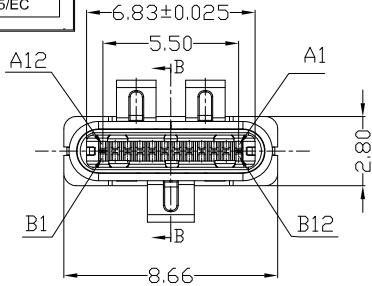


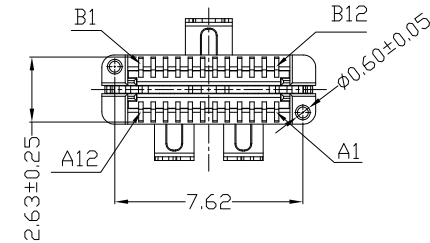


RoHS Compliant
2002/95/EC

REV.	ECN.	NO.	APPD.



RECOMMENDED PCB LAYOUT(TOP VIEW)
THICKNESS 0.8±0.10MM;DEFAULT TOLERANCE:±0.05



A1	GND	B12	GND
A2	SSTXP1	B11	SSRXP1
A3	SSTXN1	B10	SSRXN1
A4	VBUS	B9	VBUS
A5	CC1	B8	SBU2
A6	DP1	B7	DN2
A7	DN1	B6	DP2
A8	SBU1	B5	CC2
A9	VBUS	B4	VBUS
A10	SSRXN2	B3	SSTXN2
A11	SSRXP2	B2	SSTXP2
A12	GND	B1	GND
PIN	SIGNAL NAME	PIN	SIGNAL NAME

NOTES:

1. ELECTRICAL:

- CURRENT RATING: 3AMP MAX 5.0V DC.
- INSULATION RESISTANCE: 100MΩ MIN;
- CONTACT RESISTANCE: VBUS & GND PINS AND OTHER PINS: 40mΩ/PIN MAX. SHIELD: 50mΩ/MAX. LLCR MAX. CHANGE OF ALL PINS: 10mΩ.
- WITHSTANDING VOLTAGE: AC 100V FOR 1 MINUTE.
- OPERATING TEMPERATURE: -25°C TO +85°C.

2. Mechanical:

- Mating Force: 5N~20N
- Unmating Force: 8N~20N
- Durability: 10,000 cycles

3. DIMENSIONS MARKED "▼"
TO BE CHECKED BY Q.C & IPQC.

4.PART NO.

USCM-241N-4BQS20

W:WHITE
B:BLACK

1:Au 1U*
2:Au 3U*
5:Au 15U*
6:Au 30U*

1:PBT
2:PA6T
3:PA9T
4:LCP

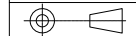
6	CONTACT	COPPER ALLOY	24	PLATED GOLD/TIN
5	PICKUP COVER	LCP+30%GF	1	UL94V-0
4	SPRING	STAINLESS STEEL	2	
3	LATCH	STAINLESS STEEL	1	PLATED TIN
2	FRONT SHELL	STAINLESS STEEL	1	PLATED NICKEL
1	HOUSING	LCP+30%GF	2	UL94V-0
NO	PARTS	MATERIAL	QTY	FINISHING

TOLERANCE		UNITS
X.X	±0.30	X.* ±10°
XX	±0.20	.X.* ±8°
XXX	±0.10	.XX.* ±5°

MAT'L	SEE NOTE
FINISH	SEE NOTE
Q'TY	

雅安科技有限公司 ACCURATE INNOTECH INC.			
TITLE: USB TYPE CM 直立式外壳 3支脚H=11.10mm		PART NO: USCM-24XN-4BQS20	
DR: Ricky 2020/04/29		DWG NO: AII-QS20	
CHKD: Ricky 2020/04/29		SCALE	SHEET
APPD:		1:1	1/2
		REV.	CUSTOMER
		B	DRAWING

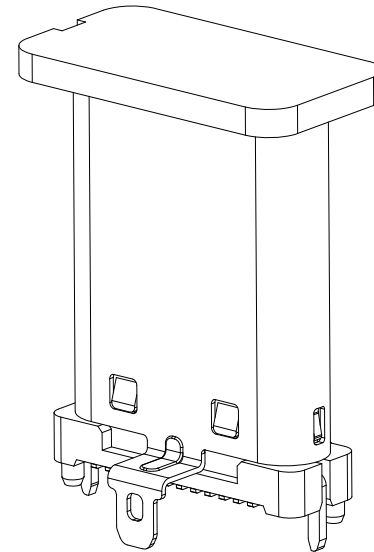
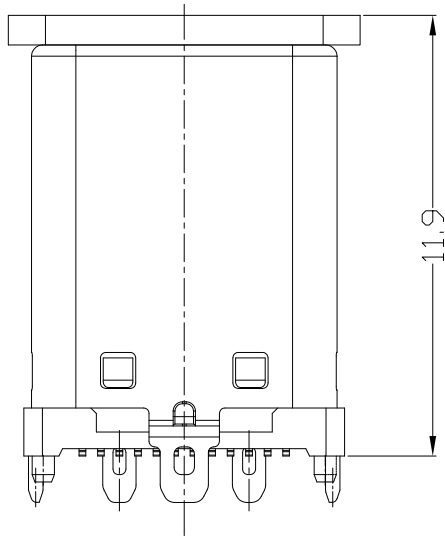
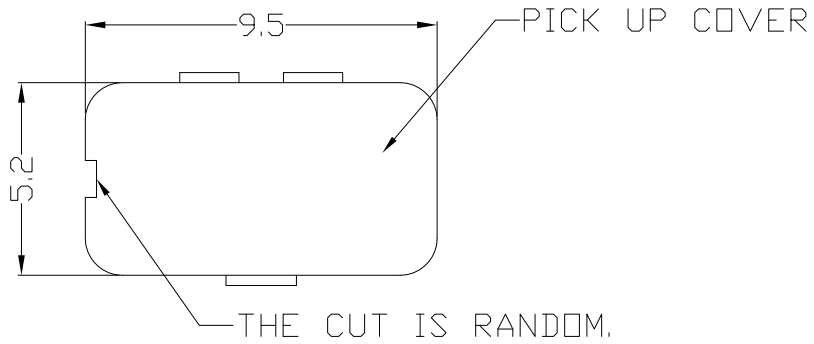
THESE DRAWINGS AND SPECIFICATIONS ARE THE PROPERTY OF ACCURATE INNOTECH INC AND SHALL NOT BE REPRODUCED, COPIED OR USED IN ANY MANNER WITHOUT THE PRIOR WRITTEN CONSENT OF ACCURATE INNOTECH INC





RoHS
Compliant
2002/95/EC

REV.	ECN.	NO.	APPD.



AFTER WITH PICKUP COVER

TOLERANCE		UNITS	雅安科技有限公司 ACCURATE INNOTECH INC.					
X.X	±0.30	X.°					±10°	mm
.XX	±0.20	.X°	±8°	MAT'L	TITLE: USB TYPE CM 直立式外壳 3支脚H=11.10mm			
.XXX	±0.10	.XX°	±5°	SEE NOTE	PART NO: USCM-24XN-4BQS20			
THESE DRAWINGS AND SPECIFICATIONS ARE THE PROPERTY OF ACCURATE INNOTECH INC. AND SHALL NOT BE REPRODUCED, COPIED OR USED IN ANY MANNER WITHOUT THE PRIOR WRITTEN CONSENT OF ACCURATE INNOTECH INC.				FINISH	DR: <i>Ricky</i> 2020/04/29			
				SEE NOTE	DWG NO: AII-QS20			
				Q'TY	CHKD: <i>Ricky</i> 2020/04/29			
				APPD:	SCALE	SHEET	REV.	CUSTOMER
				1:1	2/2	B	DRAWING	