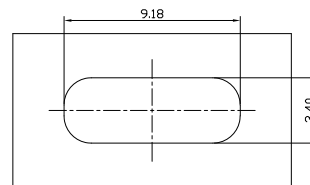
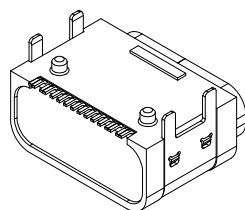
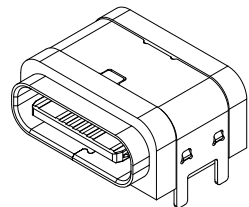
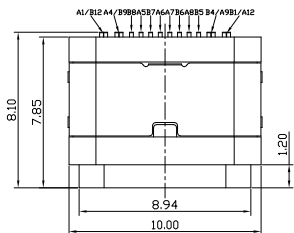




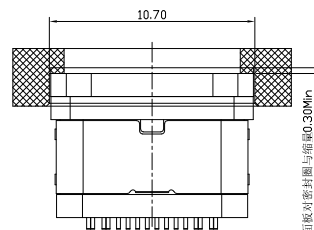
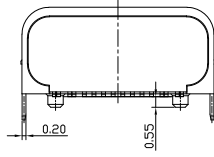
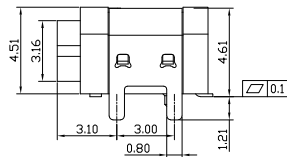
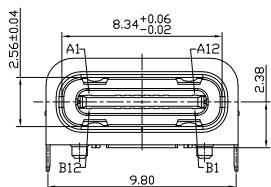
RoHS Compliant
2002/95/EC



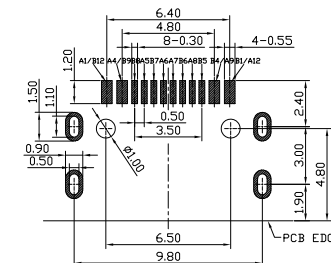
REV.	ECN.	NO.	APPD.



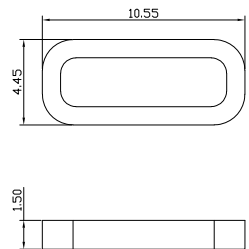
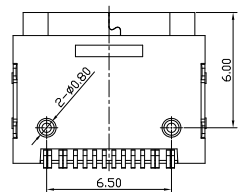
密封开孔参考尺寸(只供参考)
组装外壳时需要打环润滑油



此壳面嵌有密封胶与插脚0.30mm
(密封胶嵌紧为密封量下压方向0.5mm)



RECOMMEND P.C.B LAYOUT
TOLERANCE UNSPECIFIED ±0.05mm



防水圈图示

USB TYPE C PIN ASSIGNMENTS

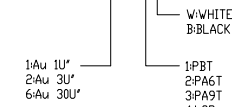
PIN NUMBER	SIGNAL NAME	PIN NUMBER	SIGNAL NAME
A1	GND	B12	GND
A4	VBUS	B9	VBUS
A5	CC1	B8	SBU2
A6	DP1	B7	DN2
A7	DN1	B6	DP2
A8	SBU1	B5	CC2
A9	VBUS	B4	VBUS
A12	GND	B1	GND

NOTES:

- ELECTRICAL:
 - VOLTAGE CURRENT RATING: 5.0A 3.0V
 - INSULATION RESISTANCE: 100MΩ MIN;
 - CONTACT RESISTANCE:
 - VBUS & GND PINS AND OTHER PINS: 40mΩ/PIN MAX
 - SHIELD: 50mΩ/MAX
 - LLCR MAX. CHANGE OF ALL PINS: 10Ωm
 - WITHSTANDING VOLTAGE: 100V AC FOR 1MINUTE
 - OPERATING TEMPERATURE: -35°C TO +85°C.
- MECHANICAL:
 - MATING FORCE: 5N~20N
 - UNMATING FORCE: 8N~20N
 - DURABILITY: 10,000 CYCLES
- DIMENSIONS MARKED "▼"
TO BE CHECKED BY Q.C & IPQC.

4.PART NO.

UWCF-161N-4BVI17



7	WATERPROOF RING	SILICONE RUBBER	1	BLACK	x.x ±0.20	x' ±5'	UNITS	mm
6	SHIELDING PLATE	STAINLESS STEEL	1	PLATED NICKEL	.xx ±0.15	x.x' ±2'	MAT'L	
5	MD HOUSING	PA&LCP+30%GF	1	UL94V-0	.xxx ±0.10		SEE NOTE	
4	MD PLATE	STAINLESS STEEL	1				SEE NOTE	
3	CONTACT	COPPER ALLOY	16	PLATED GOLD/NICKEL			FINISH	
2	SHELL	STAINLESS STEEL	1	PLATED NICKEL			Q'TY	
1	PLASTIC SHELL	PA&LCP+30%GF	1	UL94V-0				
NO	PARTS	MATERIAL	QTY	FINISHING				

THESE DRAWINGS AND SPECIFICATIONS ARE THE PROPERTY OF ACCURATE INNOTECH INC AND SHALL NOT BE REPRODUCED, COPIED OR USED IN ANY MANNER WITHOUT THE PRIOR WRITTEN CONSENT OF ACCURATE INNOTECH INC

DR:	Ricky 2024/09/25
CHKD:	Ricky 2024/09/25
APPD:	

雅安科技有限公司 ACCURATE INNOTECH INC.			
TITLE: USB TYPE CF SMT单排16P L=7.85 板上防水型 四脚插板		PART NO.: UWCF-161N-4BVI17	
DWG NO.: AII-VI17		SCALE SHEET REV. CUSTOMER 1:1 1/1 B DRAWING	