

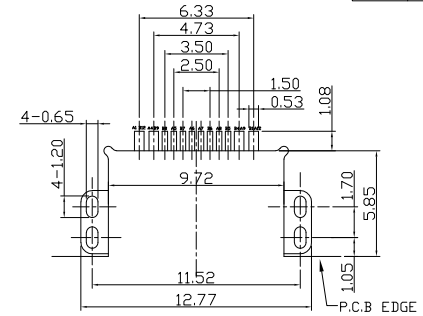
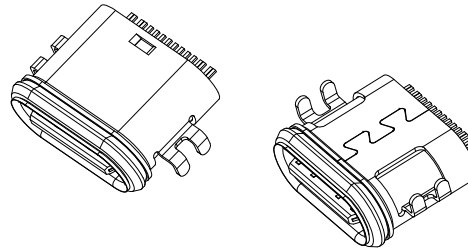
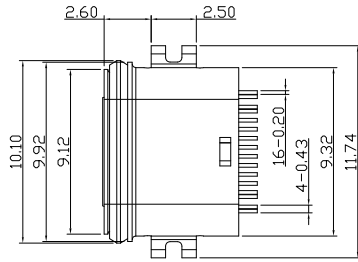


RoHS
Compliant
2002/95/EC

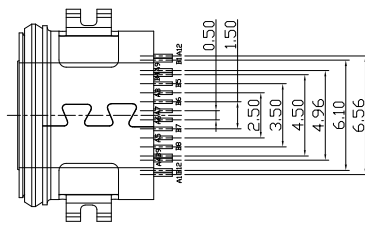
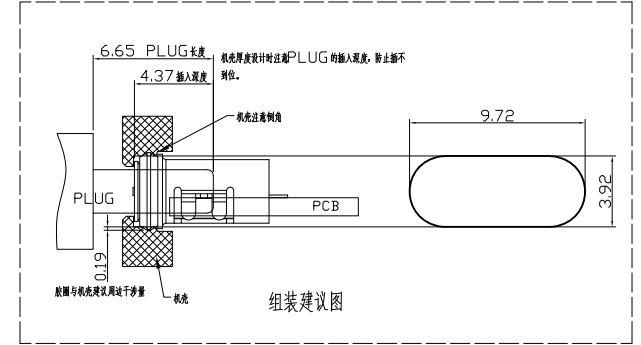
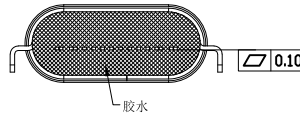
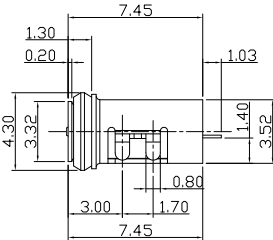
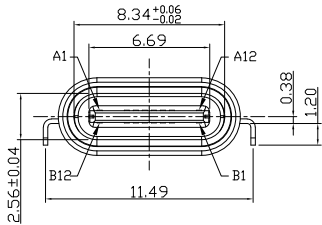


Halogen Free

REV.	ECN.	NO.	APPD.



RECOMMENDED PCB LAYOUT(TOP VIEW)
DEFAULT TOLERANCE:±0.05



USB TYPE-C PIN ASSIGNMENTS

PIN NUMBER	SIGNAL NAME	PIN NUMBER	SIGNAL NAME
A1	GND	B12	GND
A4	VBUS	B9	VBUS
A5	CC1	B8	SBU2
A6	Dp1	B7	Dn2
A7	Dn1	B6	Dp2
A8	SBU1	B5	CC2
A9	VBUS	B4	VBUS
A12	GND	B1	GND

1.ELECTRICAL:

- CURRENT VOLTAGE RATING: 5A 20V
- INSULATION RESISTANCE: 100MΩ MIN.
- CONTACT RESISTANCE:
LLCR:VBUS & GND PINS AND OTHER PINS: 40mΩ /PIN MAX.
SHIELD:50mΩ /MAX.
LLCR MAX.CHANGE OF ALL PINS: 10mΩ
- WITHSTANDING VOLTAGE: 100V AC FOR 1 MINUTE.
- OPERATING TEMPERATURE:-25°C TO +85°C.

2.Mechanical:

- Mating Force: 5N~20N
- Unmating Force: 6N~20N
- Durability: 10,000 CYCLES MIN.;

3.DIMENSIONS MARKED "▼"
TO BE CHECKED BY Q.C & IPQC.

4.PART NO.
UWCF-162N-7BV18

1:Au 1U*
2:Au 3U*
5:Au 15U*
6:Au 30U*
W:WHITE
B:BLACK
1:PB
2:PA6T
3:PA9T
4:LC
7:PA10T

Bill of materials:

NO	PARTS	MATERIAL	QTY	FINISHING				
7	WATERPROOF RING	SILICONE RUBBER	1	WHITE	x.	±0.50	x.*	±2*
6	EPOXY	BLACK	1	BLACK	.X	±0.30	.X*	±1*
5	OUTER SHELL	STAINLESS STEEL	1	PLATED NICKEL	.XX	±0.20	.XX*	±0.5*
4	INNER SHELL	STAINLESS STEEL	1		.XXX	±0.05		
3	MID PLATE	STAINLESS STEEL	1					
2	CONTACT	COPPER ALLOY	16	PLATED GOLD				
1	HOUSING	PA10T+30%GF	1	UL94V-0				
NO	PARTS	MATERIAL	QTY	FINISHING				

THESE DRAWINGS AND SPECIFICATIONS ARE THE PROPERTY OF ACCURATE INNOTECH AND SHALL NOT BE REPRODUCED, COPIED OR USED IN ANY MANNER WITHOUT THE PRIOR WRITTEN CONSENT OF ACCURATE INNOTECH INC

UNITS	mm	雅安科技有限公司 ACCURATE INNOTECH INC.	
MAT'L	SEE NOTE		
FINISH	SEE NOTE	TITLE:	PART NO.:
Q'TY		USB TYPE CF 16P单排贴板 沉板 1.4 两脚 拉伸壳 防水型	UWCF-16XN-7BV18
		DR:	DWG NO.:
		Ricky 2022/04/28	AII-VB18
		CHKD:	SCALE
		Ricky 2022/04/28	SHEET
		APPD:	REV.
			B
			CUSTOMER DRAWING