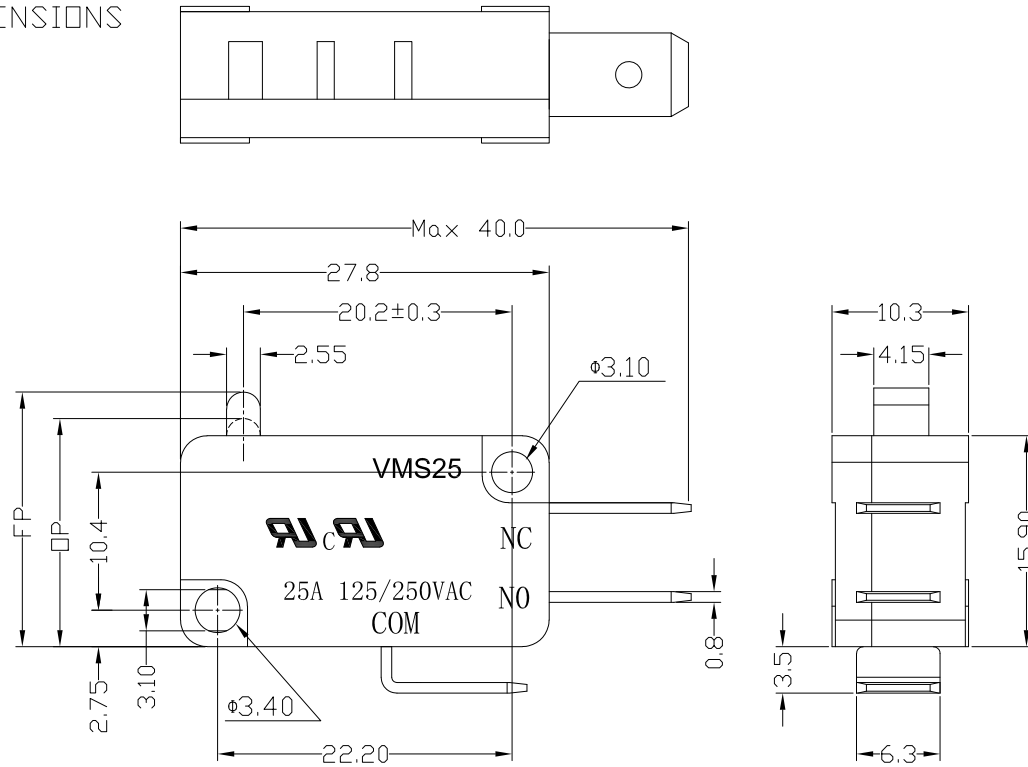




RoHS  
Compliant  
2002/95/EC

REV.	ECN. NO.	APPD.

DIMENSIONS

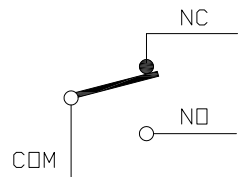


MODEL CODE

VMS 25-00 X-XX-V25

1 2 3 4 5 6

- 1.Series : VMS
- 2.Current Rating : 25=25A 125/250VAC
- 3.Actuator : 00=Non-lever 01-99=Lever
- 4.Termination : see chart (N/M/K/A)  
(7=SPST-NO / 16=SPST-NC)
- 5.Operating Force : see chart
- 6.Contact type: V25=25Amps Contact



CIRCUIT DIAGRAM

1.Functional spec

1.1 Rated Voltage(AC)	125/250VAC
1.2 Rated Current(AC)	25A
1.3 Contact Resistance	≤100mΩ(Initial value)
1.4 Operating Force	400±100gf
1.5 Bounce Time	
1.6 Free Position	19.2±0.5mm
1.7 Operating Position	17.1±0.5mm
1.8 Position Travel	
1.9 Return Force	

2.Reliable Rating

2.1 Mechanical Life	1,000,000 CYCLES
2.2 Electrical Life	10,000 CYCLES
2.3 Insulation Resistance	≥100MΩ DC500V
2.4 Withstand Voltage	AC1500V 1 minute
2.5 Soldering Technic	Hand Soldering
2.6 Operating Temper	-25°C ~ +85°C
2.7 Ambient Humidity Used	<70%RH

Tolerance:±0.2		UNITS	雅安科技有限公司 ACCURATE INNOTECH INC.			
		mm	TITLE:		PART NO.:	
		MAT'L	MICRO SWITCH VMS25 SERIES		VMS25-00K-XX-V25	
		SEE NOTE	DR: <i>Ricky</i> 2025/02/24		DWG NO.:	
		FINISH	CHKD: <i>Ricky</i> 2025/02/24		ATD-00X-XX-V25	
		SEE NOTE	APPD:		SCALE	SHEET
		Q'TY			1:1	1/2
					REV.	CUSTOMER
					A	DRAWING

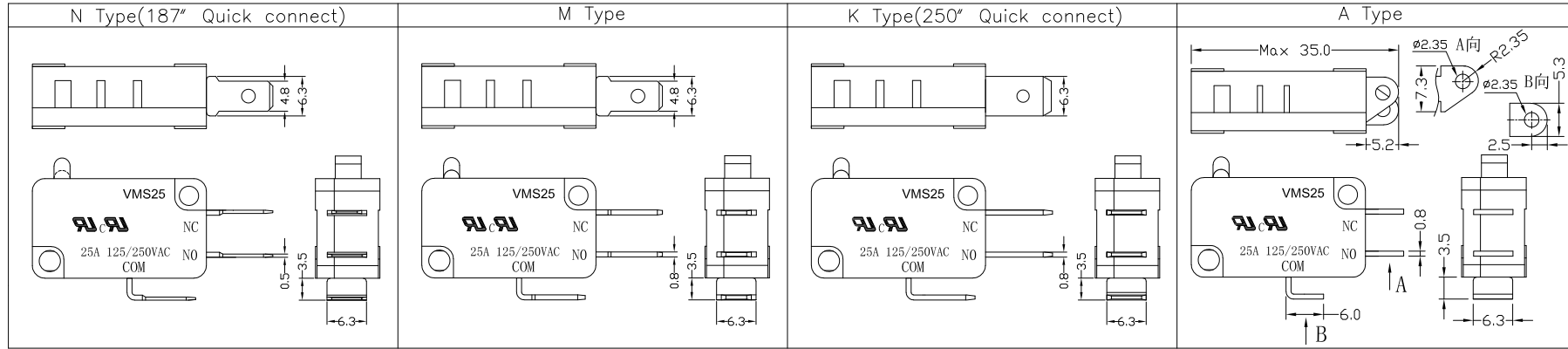
THESE DRAWINGS AND SPECIFICATIONS ARE THE PROPERTY OF ACCURATE INNOTECH INC AND SHALL NOT BE REPRODUCED, COPIED OR USED IN ANY MANNER WITHOUT THE PRIOR WRITTEN CONSENT OF ACCURATE INNOTECH INC.



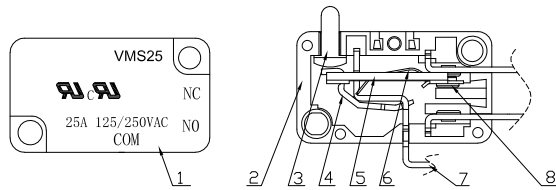
RoHS  
Compliant  
2002/95/EC

REV.	ECN.	NO.	APPD.

### Terminal Type



### Structure chart



### Material list

NO.	PARTS	MATERIAL	Q'TY	FINISHING	Tolerance:±0.2	UNITS	雅安科技有限公司 ACCURATE INNOTECH INC.				
8	Contact	Silver alloy	3		mm	SEE NOTE	TITLE: MICRO SWITCH VM25 SERIES		PART NO.: VMS25-00X-XX-V25		
7	Terminal	C2680	3				DR: <i>Ricky</i> 2025/02/24	DWG NO.: ATD-00X-XX-V25			
6	Spring Plate	C5210	1		SEE NOTE	Q'TY	CHKD: <i>Ricky</i> 2025/02/24	SCALE: 1:1	SHEET: 2/2	REV.: A	CUSTOMER DRAWING
5	Change Plate	C2680	1				APPD:				
4	Fixed Rod	C2680	1		<small>THESE DRAWINGS AND SPECIFICATIONS ARE THE PROPERTY OF ACCURATE INNOTECH INC AND SHALL NOT BE REPRODUCED, COPIED OR USED IN ANY MANNER WITHOUT THE PRIOR WRITTEN CONSENT OF ACCURATE INNOTECH INC.</small>						
3	Button	PBT	1								
2	Lower Housing	PBT	1								
1	Upper Housing	PBT	1								