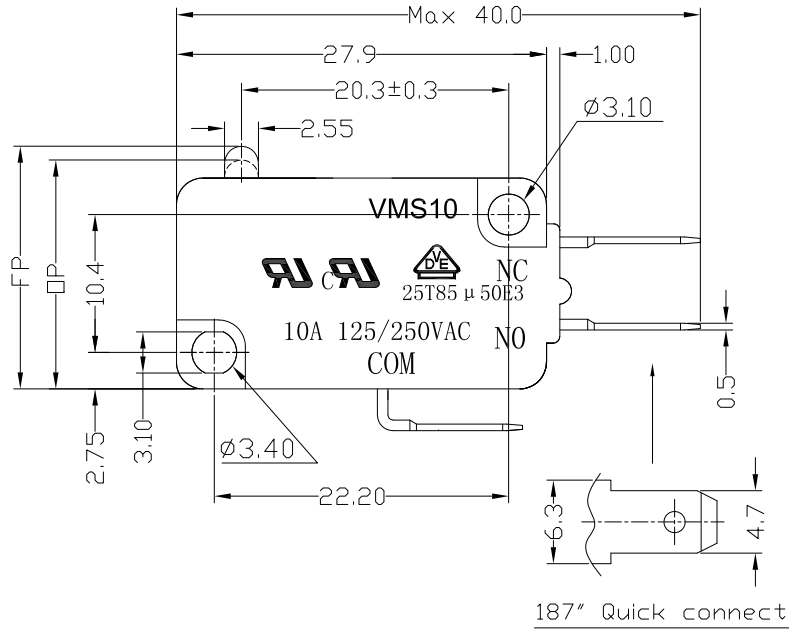




RoHS Compliant  
2002/95/EC

REV.	ECN.	NO.	APPD.

DIMENSIONS

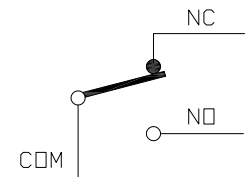


MODEL CODE

VMS 10-00 X-XX-V10

1 2 3 4 5 6

- 1.Series : VMS
- 2.Current Rating : 10=10A 125/250VAC
- 3.Actuator : 00=Non-lever 01-99=Lever
- 4.Termination : see chart (N/K/J/L/W/A)  
(7=SPST-NO / 16=SPST-NC)
- 5.Operating Force : see chart
- 6.Contact type: V10=10Amps Contact



CIRCUIT DIAGRAM

1.Functional spec

1.1 Rated Voltage(AC)	125/250VAC	
1.2 Rated Current(AC)	10A	
1.3 Contact Resistance	≤100mΩ(Initial value)	
1.4 Operating Force	160±40gf	250±50gf
1.5 Bounce Time		
1.6 Free Position	18.4±0.5mm	
1.7 Operating Position	17.5±0.5mm	
1.8 Position Travel		
1.9 Return Force		

2.Reliable Rating

2.1 Mechanical Life	1,000,000 CYCLES
2.2 Electrical Life	10,000 CYCLES
2.3 Insulation Resistance	≥100MΩ DC500V
2.4 Withstand Voltage	AC1500V 1 minute
2.5 Soldering Technic	Hand Soldering
2.6 Operating Temper	-25°C ~ +85°C
2.7 Ambient Humidity Used	<85%RH

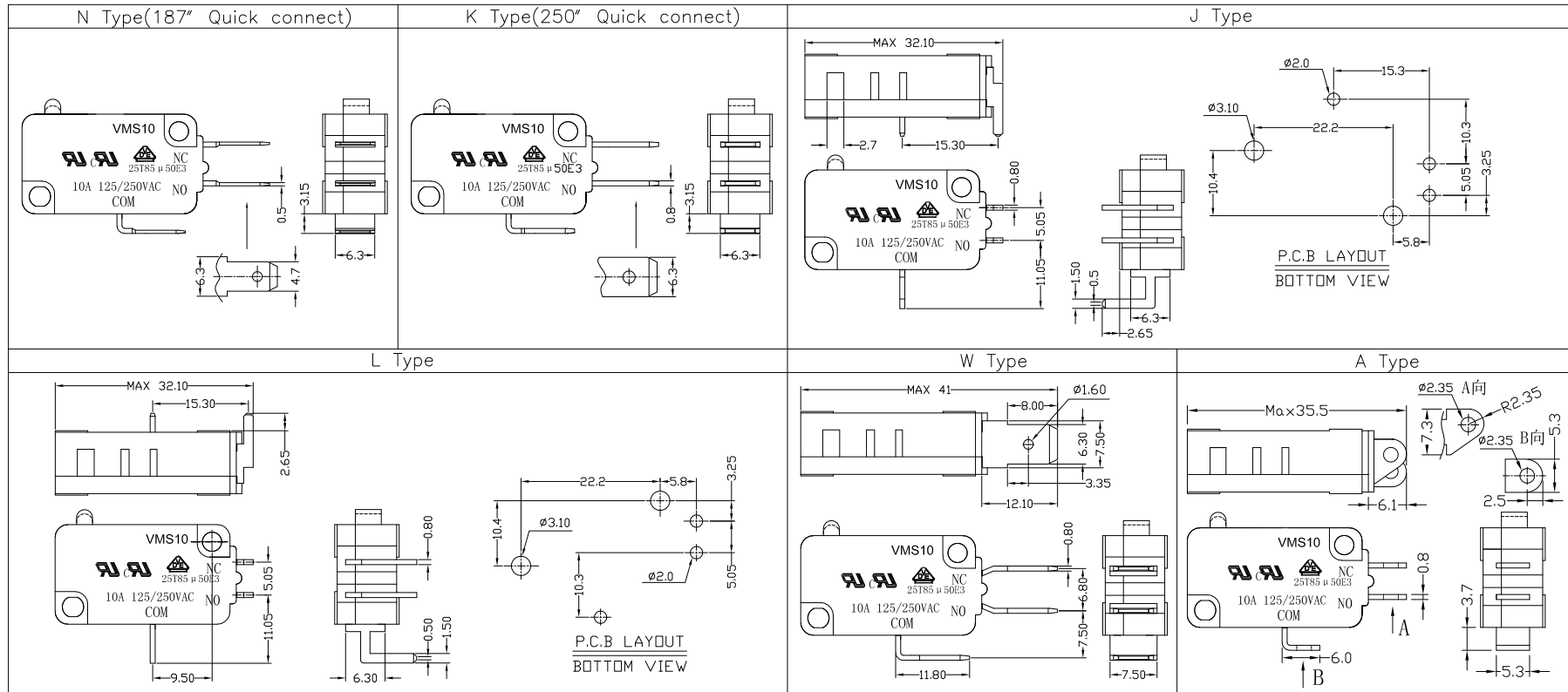
Tolerance:±0.2		UNITS	雅安科技有限公司 ACCURATE INNOTECH INC.			
		mm	TITLE:		PART NO.:	
		MAT'L	MICRO SWITCH VMS10 SERIES		VMS10-00N-XX-V10	
		SEE NOTE	DR: <i>Ricky</i> 2017/6/6		DWG NO.:	
		FINISH	CHKD: <i>Ricky</i> 2017/6/6		ATD-00X-XX-V10	
		SEE NOTE	APPD:		SCALE	SHEET
		Q'TY			1:1	1/2
THESE DRAWINGS AND SPECIFICATIONS ARE THE PROPERTY OF ACCURATE INNOTECH INC AND SHALL NOT BE REPRODUCED, COPIED OR USED IN ANY MANNER WITHOUT THE PRIOR WRITTEN CONSENT OF ACCURATE INNOTECH INC.					REV.	CUSTOMER DRAWING
					A	



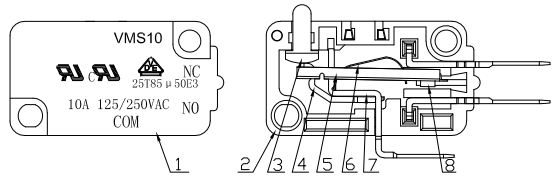
RoHS Compliant  
2002/95/EC

REV.	ECN. NO.	APPD.

### Terminal Type



### Structure chart



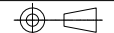
### Material list

NO.	PARTS	MATERIAL	Q'TY	FINISHING
8	Contact	Silver alloy	3	
7	Terminal	C2680	3	Silver Plating
6	Spring Plate	C5210	1	
5	Change Plate	C2680	1	
4	Fixed Rod	C2680	1	
3	Button	PBT	1	Gray
2	Lower Housing	PBT	1	Black
1	Upper Housing	PBT	1	Black

Tolerance: ±0.2	UNITS mm
	MAT'L
	SEE NOTE
	FINISH
	SEE NOTE
	Q'TY

雅安科技有限公司 ACCURATE INNOTECH INC.			
TITLE:	MICRO SWITCH VM10 SERIES	PART NO.:	VMS10-00X-XX-V10
DR:	Ricky 2017/6/6	DWG NO.:	ATD-00X-XX-V10
CHKD:	Ricky 2017/6/6	SCALE	1:1
APPD:		SHEET	2/2
		REV.	A
		CUSTOMER DRAWING	

THESE DRAWINGS AND SPECIFICATIONS ARE THE PROPERTY OF ACCURATE INNOTECH INC AND SHALL NOT BE REPRODUCED, COPIED OR USED IN ANY MANNER WITHOUT THE PRIOR WRITTEN CONSENT OF ACCURATE INNOTECH INC.

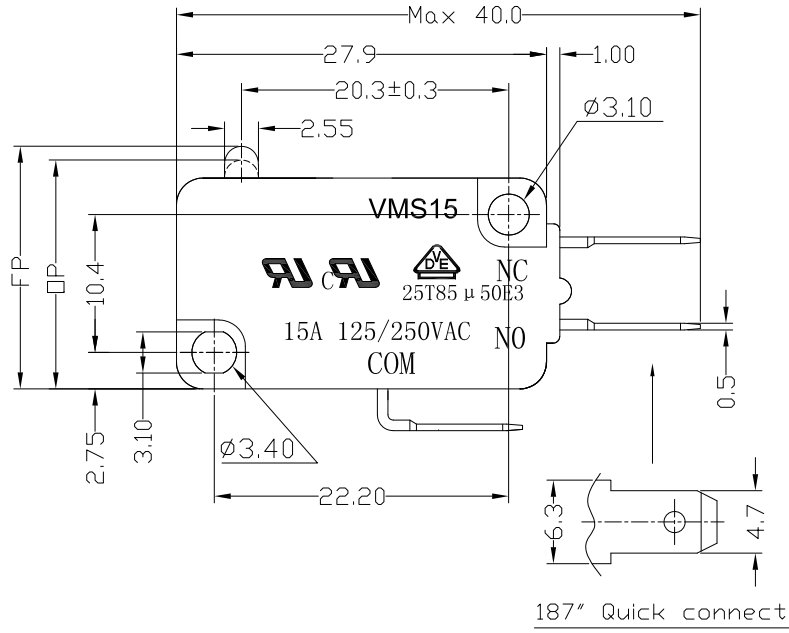




RoHS  
Compliant  
2002/95/EC

REV.	ECN.	NO.	APPD.

### DIMENSIONS

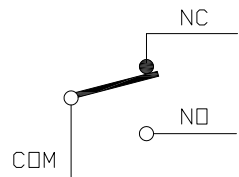


### MODEL CODE

VMS 15-00 X-XX-V15

1 2 3 4 5 6

- 1.Series : VMS
- 2.Current Rating : 15=15A 125/250VAC
- 3.Actuator : 00=Non-lever 01-99=Lever
- 4.Termination : see chart (N/K/J/L/W/A)  
(7=SPST-NO / 16=SPST-NC)
- 5.Operating Force : see chart
- 6.Contact type: V15=15Amps Contact



### CIRCUIT DIAGRAM

### 1.Functional spec

1.1 Rated Voltage(AC)	125/250VAC	
1.2 Rated Current(AC)	15A	
1.3 Contact Resistance	≤100mΩ(Initial value)	
1.4 Operating Force	160±40gf	250±50gf
1.5 Bounce Time		
1.6 Free Position	18.4±0.5mm	
1.7 Operating Position	17.5±0.5mm	
1.8 Position Travel		
1.9 Return Force		

### 2.Reliable Rating

2.1 Mechanical Life	1,000,000 CYCLES
2.2 Electrical Life	10,000 CYCLES
2.3 Insulation Resistance	≥100MΩ DC500V
2.4 Withstand Voltage	AC1500V 1 minute
2.5 Soldering Technic	Hand Soldering
2.6 Operating Temper	-25°C ~ +85°C
2.7 Ambient Humidity Used	<85%RH

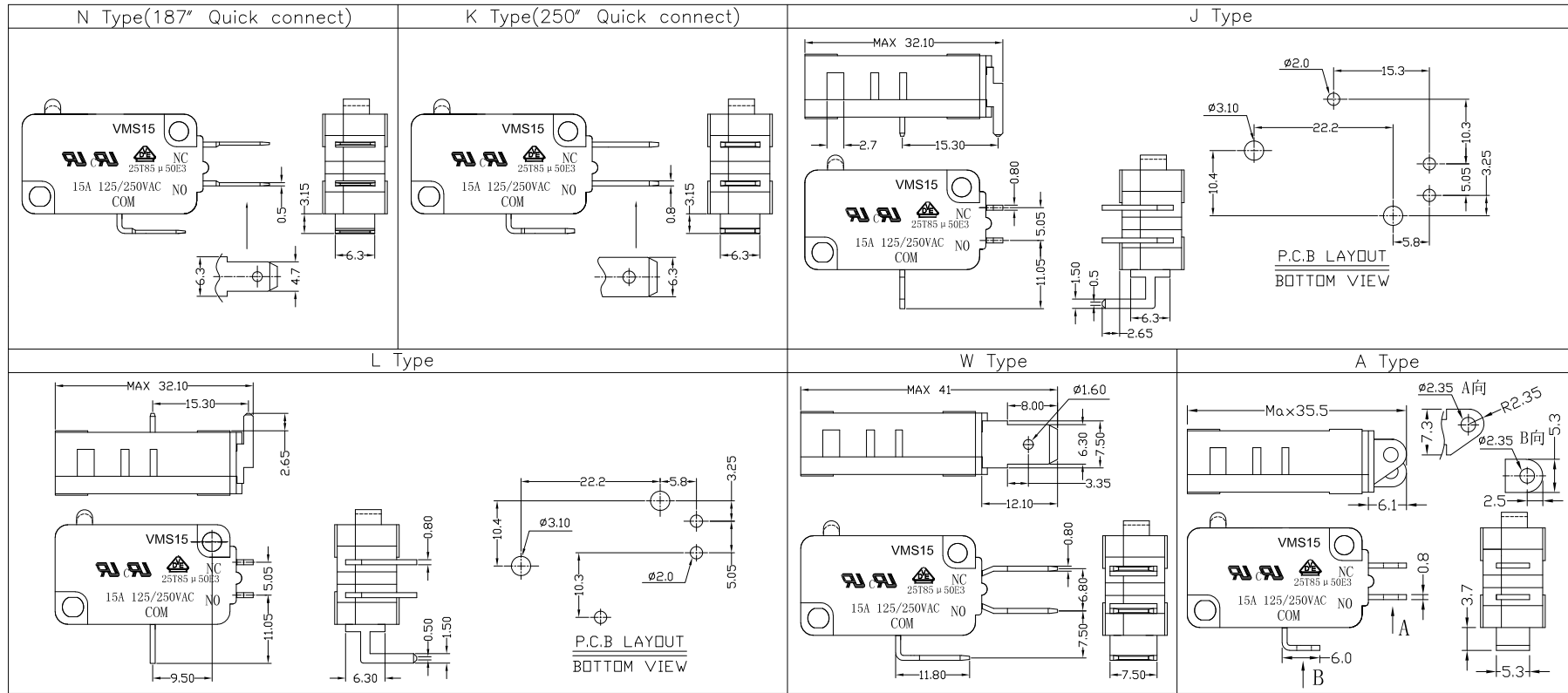
Tolerance:±0.2	UNITS mm	雅安科技有限公司 ACCURATE INNOTECH INC.				
	MAT'L					
	SEE NOTE	TITLE:	PART NO:			
	FINISH	MICRO SWITCH VMS15 SERIES	VMS15-00N-XX-V15			
	SEE NOTE	DR: <i>Ricky</i> 2017/6/8	DWG NO:			
	Q'TY	CHKD: <i>Ricky</i> 2017/6/8	ATD-00X-XX-V15			
THESE DRAWINGS AND SPECIFICATIONS ARE THE PROPERTY OF ACCURATE INNOTECH INC AND SHALL NOT BE REPRODUCED, COPIED OR USED IN ANY MANNER WITHOUT THE PRIOR WRITTEN CONSENT OF ACCURATE INNOTECH INC.		APPD:	SCALE	SHEET	REV.	CUSTOMER DRAWING
			1:1	1/2	A	



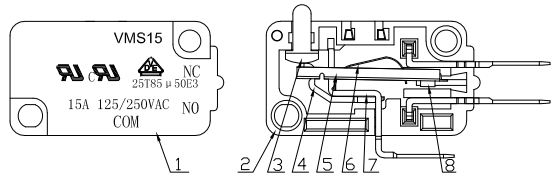
RoHS Compliant  
2002/95/EC

REV.	ECN.	NO.	APPD.

### Terminal Type



### Structure chart



### Material list

NO.	PARTS	MATERIAL	Q'TY	FINISHING	Tolerance:±0.2	UNITS	雅安科技有限公司 ACCURATE INNOTECH INC.			
8	Contact	Silver alloy	3		mm	SEE NOTE	TITLE:	PART NO.:		
7	Terminal	C2680	3	Silver Plating			DR:	VMS15-00X-XX-V15		
6	Spring Plate	C5210	1		SEE NOTE	Q'TY	MICRO SWITCH VM15 SERIES	DWG NO.:		
5	Change Plate	C2680	1				DR:	ATD-00X-XX-V15		
4	Fixed Rod	C2680	1		SEE NOTE	APPD:	CHKD:	SCALE SHEET REV. CUSTOMER		
3	Button	PBT	1	Gray			DR:	DRAWING		
2	Lower Housing	PBT	1	Black	SEE NOTE	APPD:	CHKD:	SCALE SHEET REV. CUSTOMER		
1	Upper Housing	PBT	1	Black			DR:	DRAWING		
8	CONTACT	SILVER ALLOY	3				11	2/2	A	

THESE DRAWINGS AND SPECIFICATIONS ARE THE PROPERTY OF ACCURATE INNOTECH INC AND SHALL NOT BE REPRODUCED, COPIED OR USED IN ANY MANNER WITHOUT THE PRIOR WRITTEN CONSENT OF ACCURATE INNOTECH INC.

