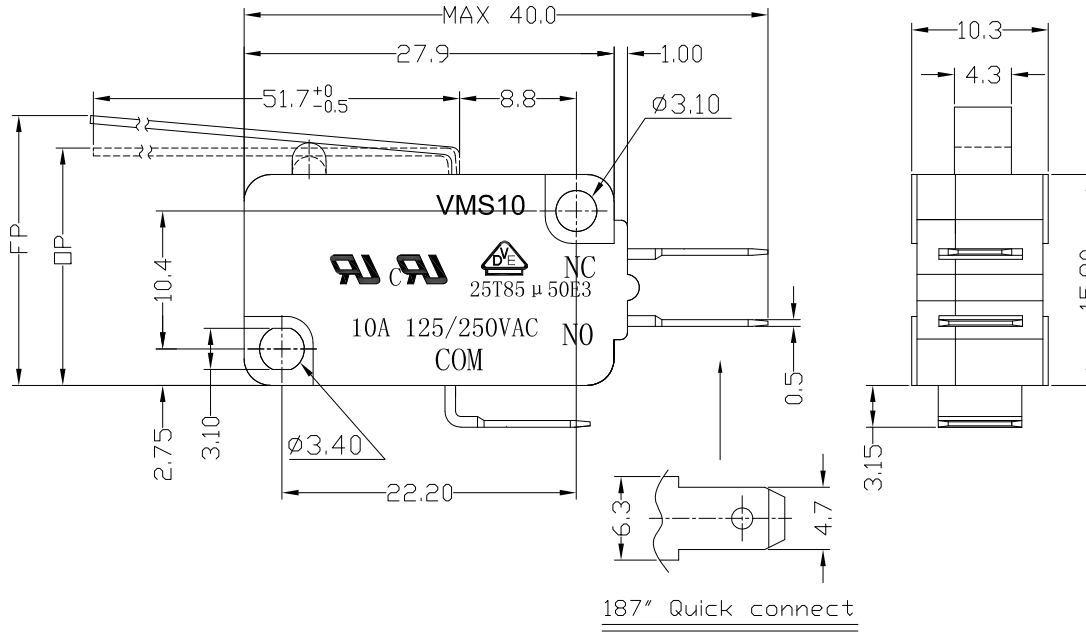




RoHS Compliant
2002/95/EC

REV.	ECN.	NO.	APPD.

DIMENSIONS



1.Functional spec

1.1 Rated Voltage(AC)	125/250VAC
1.2 Rated Current(AC)	10A
1.3 Contact Resistance	≤100mΩ(Initial value)
1.4 Operating Force	35±15gf 60±25gf
1.5 Bounce Time	
1.6 Free Position	22.6±2.0mm
1.7 Operating Position	18.1±2.0mm
1.8 Position Travel	
1.9 Return Force	

2.Reliable Rating

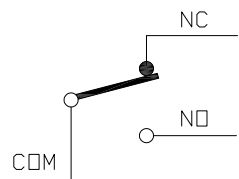
2.1 Mechanical Life	1,000,000 CYCLES
2.2 Electrical Life	10,000 CYCLES
2.3 Insulation Resistance	≥100MΩ DC500V
2.4 Withstand Voltage	AC1500V 1 minute
2.5 Soldering Technic	Hand Soldering
2.6 Operating Temper	-25°C ~ +85°C
2.7 Ambient Humidity Used	<85%RH

MODEL CODE

VMS 10-03 X- XX-V10

1 2 3 4 5 6

- 1.Series : VMS
- 2.Current Rating : 10=10A 125/250VAC
- 3.Actuator : 00=Non-lever 01-99=Lever
- 4.Termination : see chart (N/K/J/L/W/A)
(7=SPST-NO / 16=SPST-NC)
- 5.Operating Force : see chart
- 6.Contact type: V10=10Amps Contact



CIRCUIT DIAGRAM

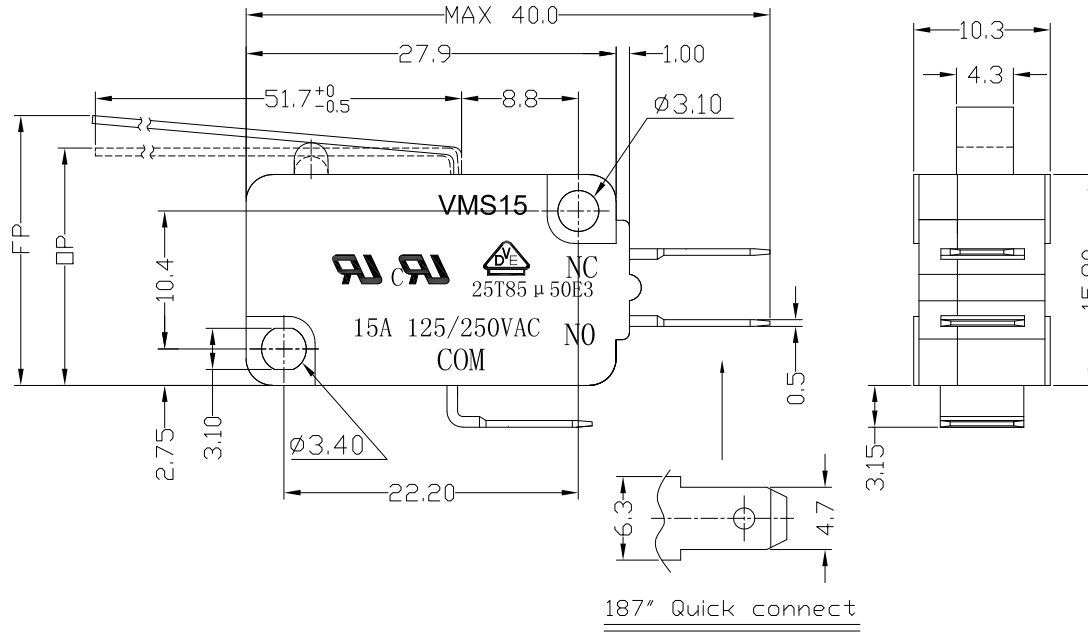
Tolerance:±0.2	UNITS mm	雅安科技有限公司 ACCURATE INNOTECH INC.			
	MAT'L	TITLE: MICRO SWITCH VMS10 SERIES		PART NO: VMS10-03N-XX-V10	
	SEE NOTE	DR: Ricky 2017/6/7		DWG NO: ATD-03X-XX-V10	
	FINISH	CHKD: Ricky 2017/6/7			
	SEE NOTE	APPD:		SCALE 1:1	SHEET 1/2
	Q'TY			REV. A	CUSTOMER DRAWING
THESE DRAWINGS AND SPECIFICATIONS ARE THE PROPERTY OF ACCURATE INNOTECH INC AND SHALL NOT BE REPRODUCED, COPIED OR USED IN ANY MANNER WITHOUT THE PRIOR WRITTEN CONSENT OF ACCURATE INNOTECH INC.					



RoHS Compliant
2002/95/EC

REV.	ECN.	NO.	APPD.

DIMENSIONS

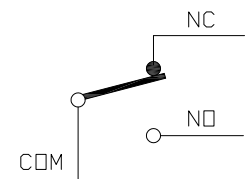


MODEL CODE

VMS 15-03 X-XX-V15

1 2 3 4 5 6

- 1.Series : VMS
- 2.Current Rating : 15=15A 125/250VAC
- 3.Actuator : 00=Non-lever 01-99=Lever
- 4.Termination : see chart (N/K/J/L/W/A)
(7=SPST-NO / 16=SPST-NC)
- 5.Operating Force : see chart
- 6.Contact type: V15=15Amps Contact



CIRCUIT DIAGRAM

1.Functional spec

1.1 Rated Voltage(AC)	125/250VAC	
1.2 Rated Current(AC)	15A	
1.3 Contact Resistance	≤100mΩ(Initial value)	
1.4 Operating Force	35±15gf	60±25gf
1.5 Bounce Time		
1.6 Free Position	22.6±2.0mm	
1.7 Operating Position	18.1±2.0mm	
1.8 Position Travel		
1.9 Return Force		

2.Reliable Rating

2.1 Mechanical Life	1,000,000 CYCLES
2.2 Electrical Life	10,000 CYCLES
2.3 Insulation Resistance	≥100MΩ DC500V
2.4 Withstand Voltage	AC1500V 1 minute
2.5 Soldering Technic	Hand Soldering
2.6 Operating Temper	-25°C ~ +85°C
2.7 Ambient Humidity Used	<85%RH

Tolerance:±0.2	UNITS	雅安科技有限公司 ACCURATE INNOTECH INC.			
	mm				
	MAT'L	TITLE:		PART NO.:	
	SEE NOTE	MICRO SWITCH VMS15 SERIES		VMS15-03N-XX-V15	
	FINISH	DR: <i>Ricky</i> 2017/6/8		DWG NO.:	
	SEE NOTE	CHKD: <i>Ricky</i> 2017/6/8		ATD-03X-XX-V15	
	Q'TY	APPD:		SCALE	SHEET
				1:1	1/2
				REV.	CUSTOMER
				A	DRAWING

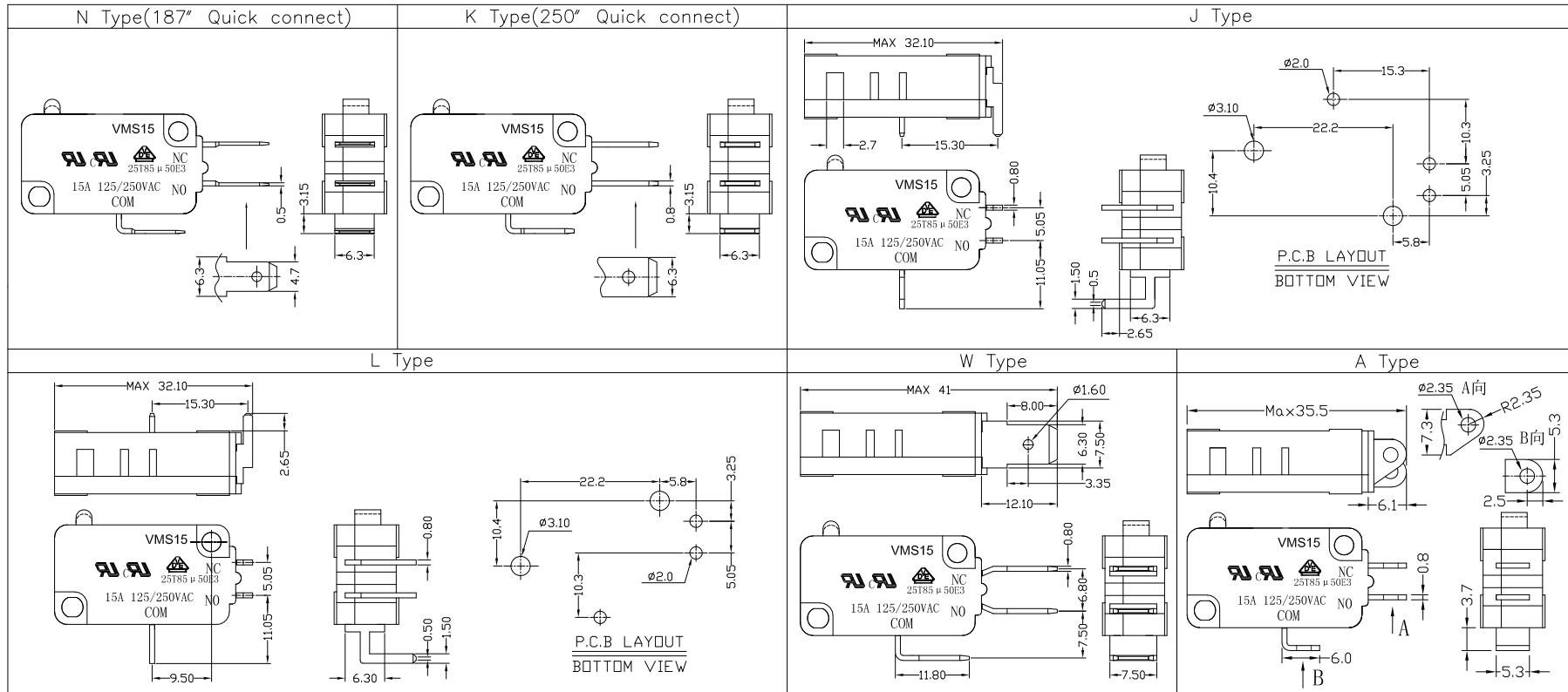
THESE DRAWINGS AND SPECIFICATIONS ARE THE PROPERTY OF ACCURATE INNOTECH INC AND SHALL NOT BE REPRODUCED, COPIED OR USED IN ANY MANNER WITHOUT THE PRIOR WRITTEN CONSENT OF ACCURATE INNOTECH INC.



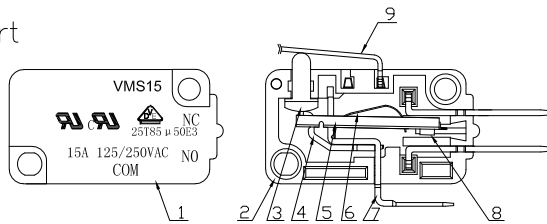
RoHS Compliant
2002/95/EC

REV.	ECN.	NO.	APPD.

Terminal Type



Structure chart



Material list

NO.	PARTS	MATERIAL	Q'TY	FINISHING	UNITS	mm	雅安科技有限公司 ACCURATE INNOTECH INC.					
9	Lever	SUS301	1		Tolerance: ±0.2	mm	TITLE: MICRO SWITCH VM15 SERIES		PART NO.: VMS15-03X-XX-V15			
8	Contact	Silver alloy	3				SEE NOTE	DR: Ricky 2017/6/8		DWG NO.: ATD-03X-XX-V15		
7	Terminal	C2680	3	Silver Plating			FINISH: SEE NOTE		CHKD: Ricky 2017/6/8			
6	Spring Plate	C5210	1				Q'TY		APPD:			
5	Change Plate	C2680	1		THESE DRAWINGS AND SPECIFICATIONS ARE THE PROPERTY OF ACCURATE INNOTECH INC AND SHALL NOT BE REPRODUCED, COPIED OR USED IN ANY MANNER WITHOUT THE PRIOR WRITTEN CONSENT OF ACCURATE INNOTECH INC.		SCALE		REV.			
4	Fixed Rod	C2680	1				11		2/2		A	
3	Button	PBT	1	Gray			11		2/2		A	
2	Lower Housing	PBT	1	Black			11		2/2		A	
1	Upper Housing	PBT	1	Black			11		2/2		A	
NO.	PARTS	MATERIAL	Q'TY	FINISHING			CUSTOMER DRAWING					