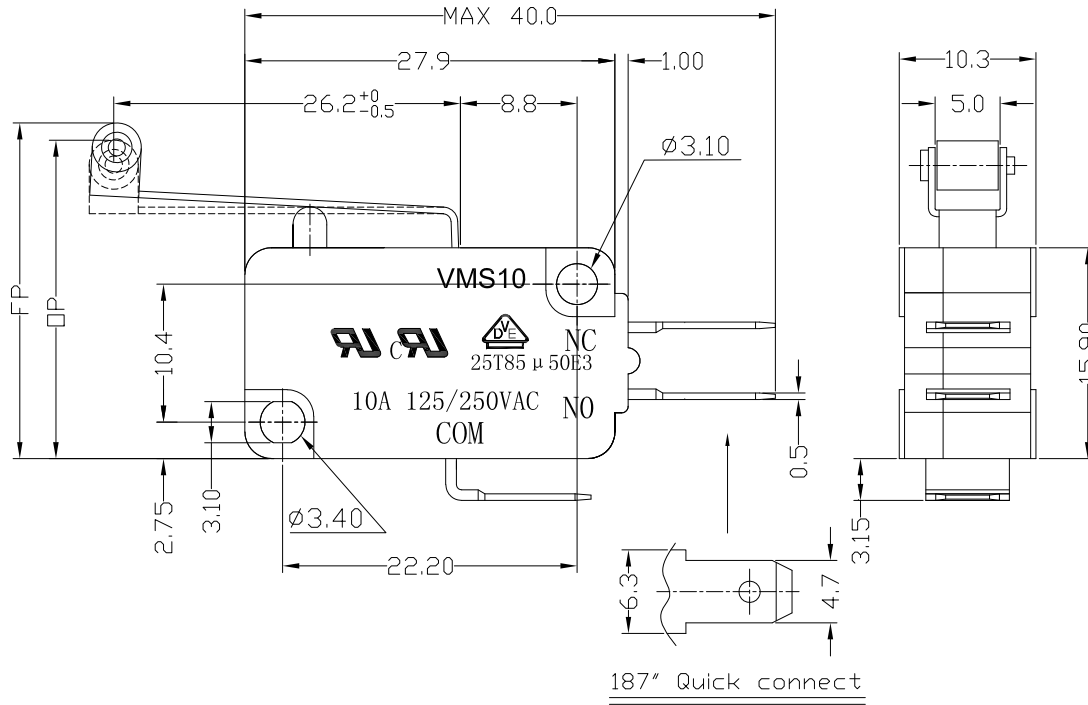




RoHS  
Compliant  
2002/95/EC

REV.	ECN.	NO.	APPD.

DIMENSIONS



1.Functional spec

1.1 Rated Voltage(AC)	125/250VAC	
1.2 Rated Current(AC)	10A	
1.3 Contact Resistance	≤100mΩ(Initial value)	
1.4 Operating Force	80±25gf	125±40gf
1.5 Bounce Time		
1.6 Free Position	26.0±1.5mm	
1.7 Operating Position	23.5±1.5mm	
1.8 Position Travel		
1.9 Return Force		

2.Reliable Rating

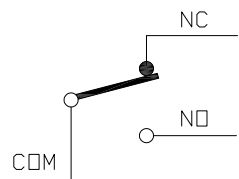
2.1 Mechanical Life	1,000,000 CYCLES
2.2 Electrical Life	10,000 CYCLES
2.3 Insulation Resistance	≥100MΩ DC500V
2.4 Withstand Voltage	AC1500V 1 minute
2.5 Soldering Technic	Hand Soldering
2.6 Operating Temper	-25°C ~ +85°C
2.7 Ambient Humidity Used	<85%RH

MODEL CODE

VMS 10-06 X-XX-V10

1 2 3 4 5 6

- 1.Series : VMS
- 2.Current Rating : 10=10A 125/250VAC
- 3.Actuator : 00=Non-lever 01-99=Lever
- 4.Termination : see chart (N/K/J/L/W/A)  
(7=SPST-NO / 16=SPST-NC)
- 5.Operating Force : see chart
- 6.Contact type: V10=10Amps Contact



CIRCUIT DIAGRAM

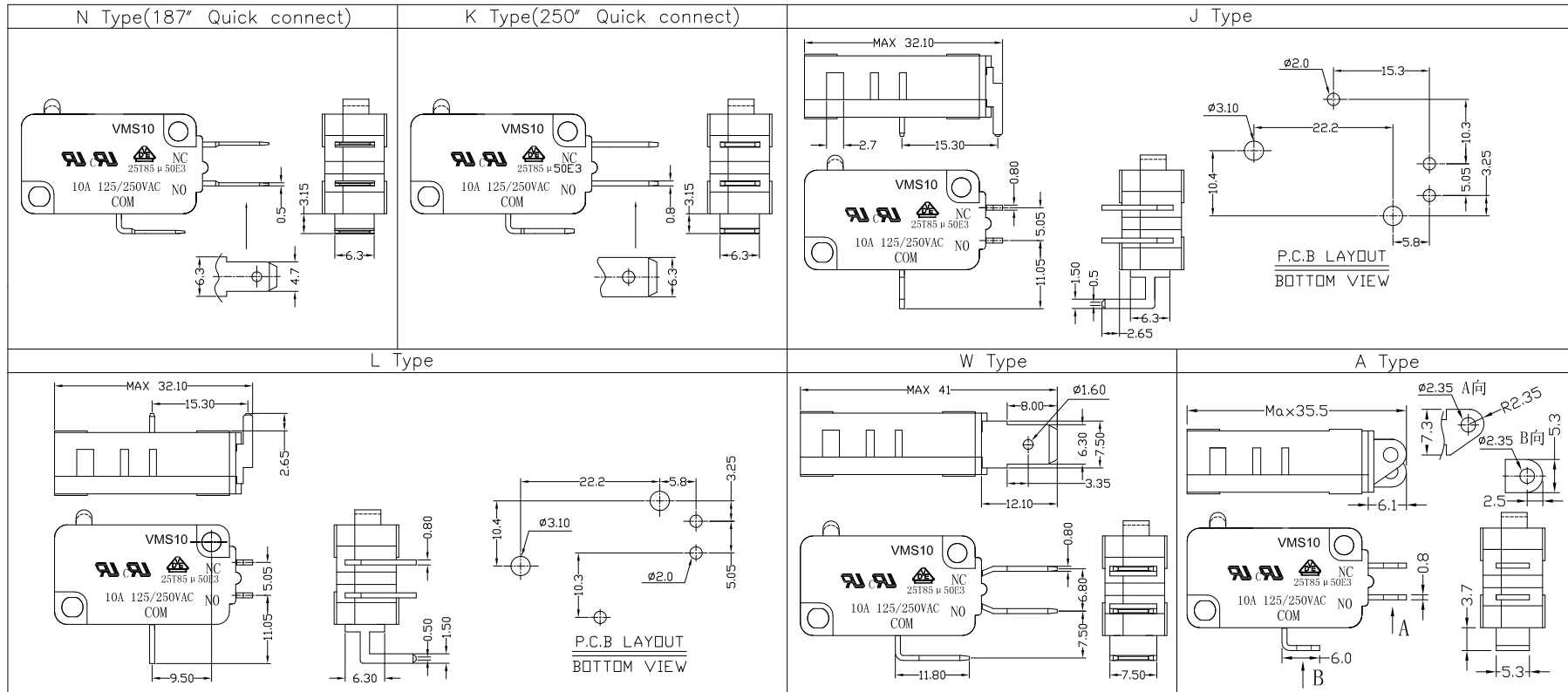
Tolerance:±0.2	UNITS mm	雅安科技有限公司 ACCURATE INNOTECH INC.			
	MAT'L	TITLE: MICRO SWITCH VMS10 SERIES		PART NO: VMS10-06N-XX-V10	
	SEE NOTE	DR: Ricky 2017/6/7		DWG NO: ATD-06X-XX-V10	
	FINISH	CHKD: Ricky 2017/6/7			
	SEE NOTE	APPD:		SCALE 1:1	SHEET 1/2
	Q'TY			REV. A	CUSTOMER DRAWING
THESE DRAWINGS AND SPECIFICATIONS ARE THE PROPERTY OF ACCURATE INNOTECH INC AND SHALL NOT BE REPRODUCED, COPIED OR USED IN ANY MANNER WITHOUT THE PRIOR WRITTEN CONSENT OF ACCURATE INNOTECH INC.					



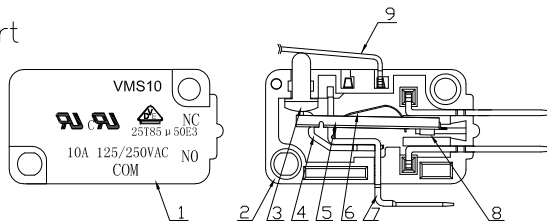
RoHS Compliant  
2002/95/EC

REV.	ECN.	NO.	APPD.

Terminal Type



Structure chart



Material list

NO.	PARTS	MATERIAL	Q'TY	FINISHING
9	Lever	SUS301	1	
8	Contact	Silver alloy	3	
7	Terminal	C2680	3	Silver Plating
6	Spring Plate	C5210	1	
5	Change Plate	C2680	1	
4	Fixed Rod	C2680	1	
3	Button	PBT	1	Gray
2	Lower Housing	PBT	1	Black
1	Upper Housing	PBT	1	Black
	PARTS	MATERIAL	Q'TY	FINISHING

Tolerance: ±0.2	UNITS mm
	MAT'L
	SEE NOTE
	FINISH
	SEE NOTE
	Q'TY

雅安科技有限公司 ACCURATE INNOTECH INC.			
TITLE:	MICRO SWITCH VM10 SERIES	PART NO.:	VMS10-06X-XX-V10
DR:	Ricky 2017/6/7	DWG NO.:	ATD-06X-XX-V10
CHKD:	Ricky 2017/6/7	SCALE	1:1
APPD:		SHEET	2/2
		REV.	A
		CUSTOMER DRAWING	

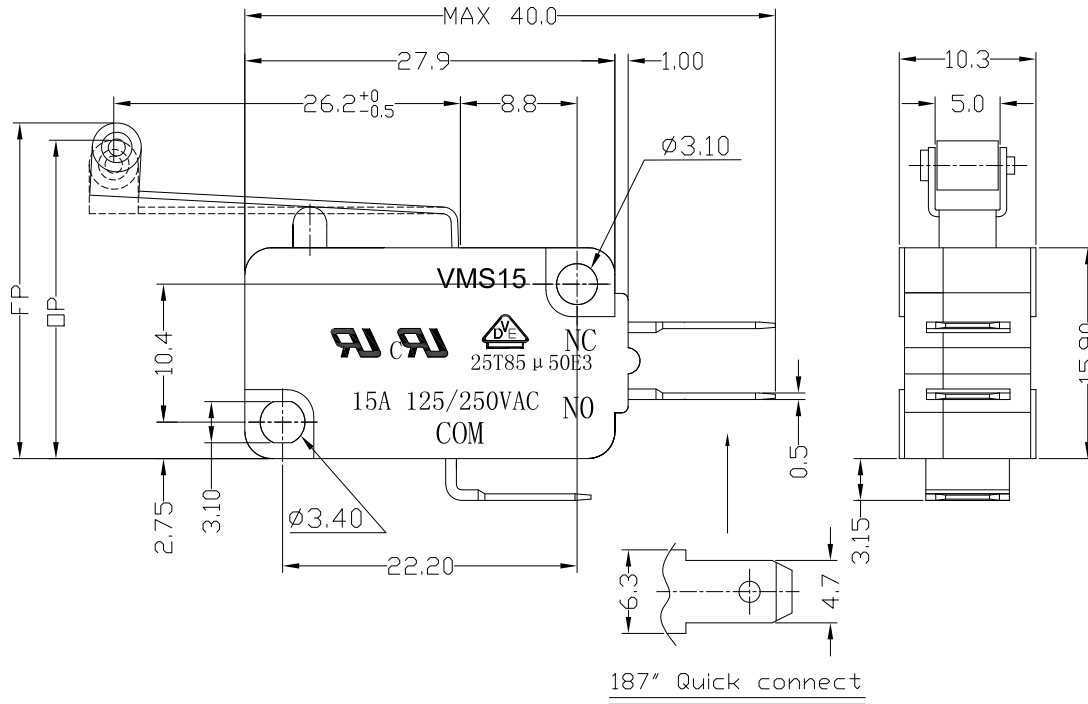
THESE DRAWINGS AND SPECIFICATIONS ARE THE PROPERTY OF ACCURATE INNOTECH INC AND SHALL NOT BE REPRODUCED, COPIED OR USED IN ANY MANNER WITHOUT THE PRIOR WRITTEN CONSENT OF ACCURATE INNOTECH INC.



RoHS  
Compliant  
2002/95/EC

REV.	ECN.	NO.	APPD.

### DIMENSIONS



### 1.Functional spec

1.1 Rated Voltage(AC)	125/250VAC	
1.2 Rated Current(AC)	15A	
1.3 Contact Resistance	≤100mΩ(Initial value)	
1.4 Operating Force	80±25gf	125±40gf
1.5 Bounce Time		
1.6 Free Position	26.0±1.5mm	
1.7 Operating Position	23.5±1.5mm	
1.8 Position Travel		
1.9 Return Force		

### 2.Reliable Rating

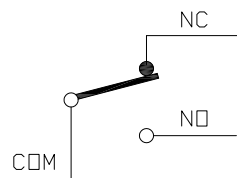
2.1 Mechanical Life	1,000,000 CYCLES
2.2 Electrical Life	10,000 CYCLES
2.3 Insulation Resistance	≥100MΩ DC500V
2.4 Withstand Voltage	AC1500V 1 minute
2.5 Soldering Technic	Hand Soldering
2.6 Operating Temper	-25°C ~ +85°C
2.7 Ambient Humidity Used	<85%RH

### MODEL CODE

VMS 15-06 X-XX-V15

1 2 3 4 5 6

- Series : VMS
- Current Rating : 15=15A 125/250VAC
- Actuator : 00=Non-lever 01-99=Lever
- Termination : see chart (N/K/J/L/W/A)  
(7=SPST-NO / 16=SPST-NC)
- Operating Force : see chart
- Contact type: V15=15Amps Contact



### CIRCUIT DIAGRAM

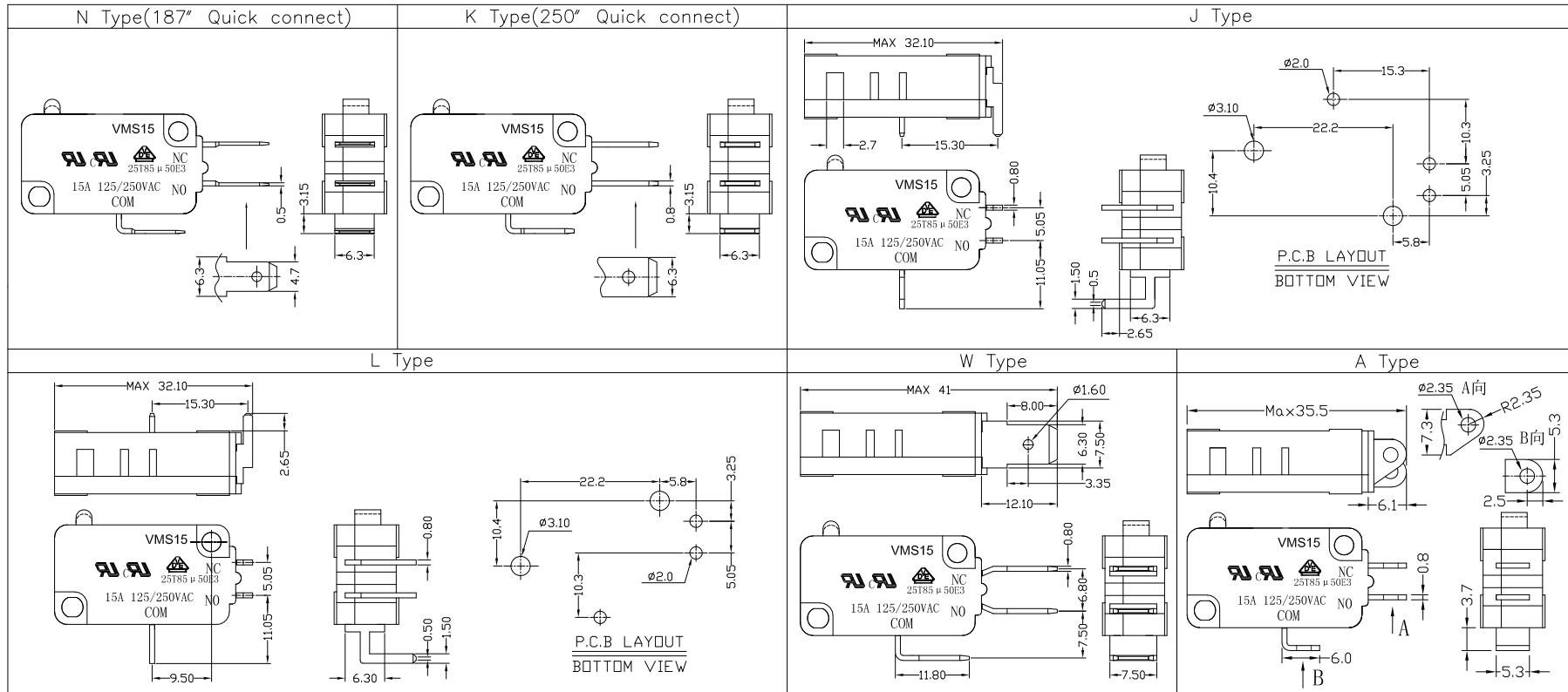
Tolerance:±0.2	UNITS mm	雅安科技有限公司 ACCURATE INNOTECH INC.				
	MAT'L					TITLE:
	SEE NOTE	FINISH	MICRO SWITCH VMS15 SERIES	VMS15-06N-XX-V15		
	SEE NOTE	DR:	Ricky 2017/6/8	DWG NO.:		
	Q'TY	CHKD:	Ricky 2017/6/8	ATD-06X-XX-V15		
THESE DRAWINGS AND SPECIFICATIONS ARE THE PROPERTY OF ACCURATE INNOTECH INC AND SHALL NOT BE REPRODUCED, COPIED OR USED IN ANY MANNER WITHOUT THE PRIOR WRITTEN CONSENT OF ACCURATE INNOTECH INC.		APPD:	SCALE	SHEET	REV.	CUSTOMER DRAWING
			1:1	1/2	A	



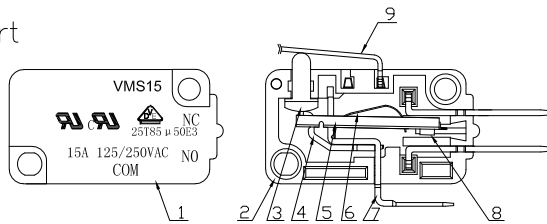
RoHS Compliant  
2002/95/EC

REV.	ECN.	NO.	APPD.

Terminal Type



Structure chart



Material list

NO.	PARTS	MATERIAL	Q'TY	FINISHING
9	Lever	SUS301	1	
8	Contact	Silver alloy	3	
7	Terminal	C2680	3	Silver Plating
6	Spring Plate	C5210	1	
5	Change Plate	C2680	1	
4	Fixed Rod	C2680	1	
3	Button	PBT	1	Gray
2	Lower Housing	PBT	1	Black
1	Upper Housing	PBT	1	Black

Tolerance: ±0.2

UNITS mm

MAT'L

SEE NOTE

FINISH

SEE NOTE

Q'TY

THESE DRAWINGS AND SPECIFICATIONS ARE THE PROPERTY OF ACCURATE INNOTECH INC AND SHALL NOT BE REPRODUCED, COPIED OR USED IN ANY MANNER WITHOUT THE PRIOR WRITTEN CONSENT OF ACCURATE INNOTECH INC.

雅安科技有限公司 ACCURATE INNOTECH INC.			
TITLE: MICRO SWITCH VM15 SERIES		PART NO.: VMS15-06X-XX-V15	
DR: <i>Ricky</i> 2017/6/8		DWG NO.: ATD-06X-XX-V15	
CHKD: <i>Ricky</i> 2017/6/8		SCALE	SHEET
APPD:		11	2/2
		REV.	CUSTOMER DRAWING
		A	