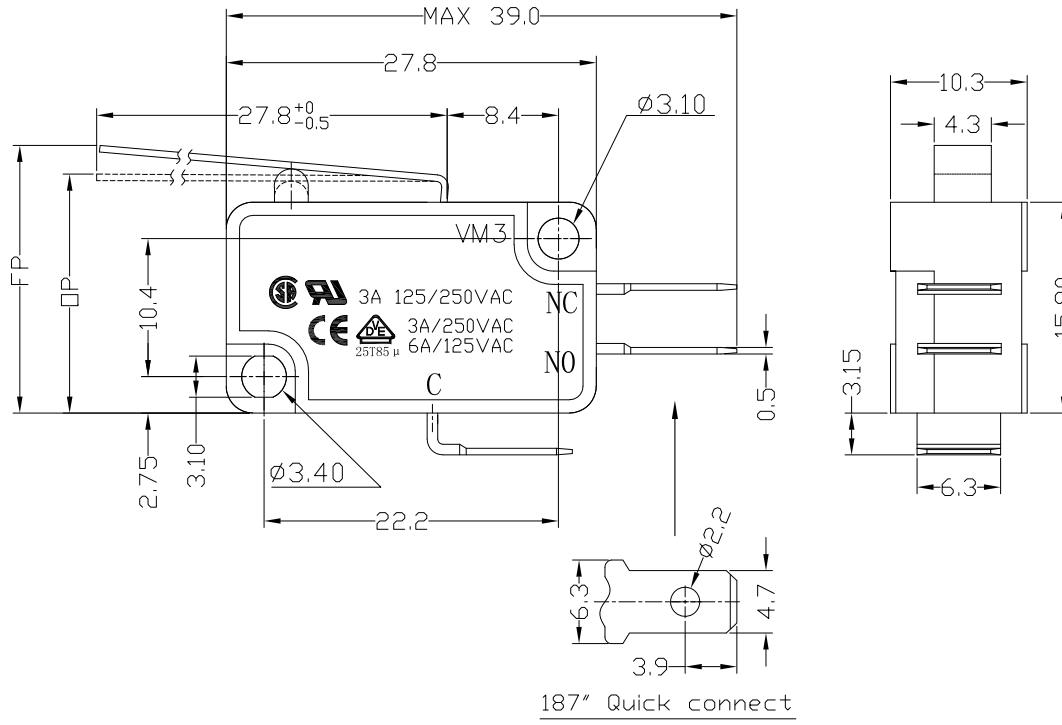




RoHS Compliant
2002/95/EC

REV.	ECN.	NO.	APPD.

DIMENSIONS



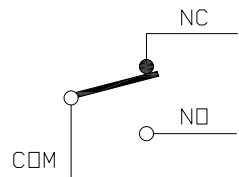
187" Quick connect

MODEL CODE

VM 3- 02 X-XXS-U56

1 2 3 4 5 6 7

- 1.Series : VM
- 2.Current Rating : 3=3A 125/250VAC
- 3.Actuator : 00=Non-lever 01-99=Lever
- 4.Termination : see chart (N/K)
(2=SPST-NO / 16=SPST-NC)
- 5.Operating Force : see chart
- 6.Spring Material:S=SUS304
- 7.Contact type: U56=3Amps Contact



CIRCUIT DIAGRAM

1.Functional spec

1.1 Rated Voltage(AC)	125/250VAC
1.2 Rated Current(AC)	3A
1.3 Contact Resistance	≤100mΩ(Initial value)
1.4 Operating Force	40±15gf 70±25gf 110±30gf
1.5 Bounce Time	
1.6 Free Position	20.8±0.8mm
1.7 Operating Position	18.3±0.8mm
1.8 Position Travel	
1.9 Return Force	

2.Reliable Rating

2.1 Mechanical Life	1,000,000 CYCLES
2.2 Electrical Life	10,000 CYCLES
2.3 Insulation Resistance	≥100MΩ DC500V
2.4 Withstand Voltage	AC1500V 1 minute
2.5 Soldering Technic	Hand Soldering
2.6 Operating Temper	-25°C ~ +85°C
2.7 Ambient Humidity Used	<85%RH

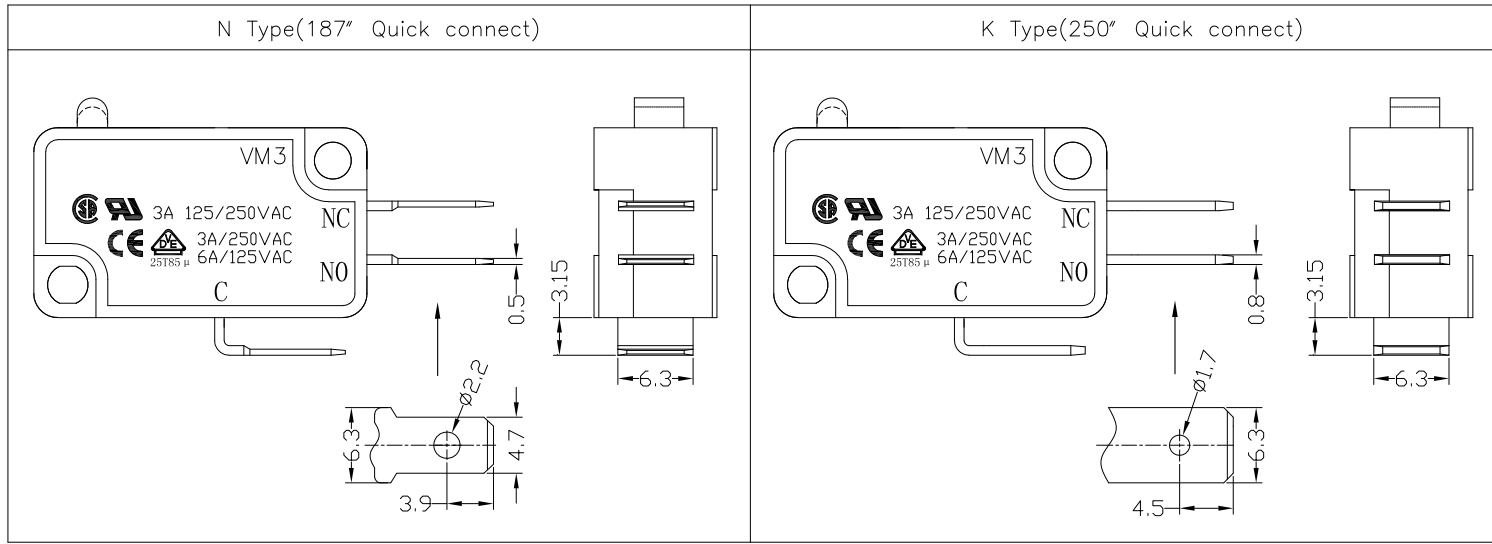
Tolerance:±0.2	UNITS	雅安科技有限公司 ACCURATE INNOTECH INC.			
	MAT'L	TITLE:	PART NO.:		
SEE NOTE	FINISH	MICRO SWITCH VM3 SERIES	VM3-02N-XXS-U56		
SEE NOTE	Q'TY	DR: <i>Ricky</i> 2017/5/10	DWG NO.:		
THESE DRAWINGS AND SPECIFICATIONS ARE THE PROPERTY OF ACCURATE INNOTECH INC AND SHALL NOT BE REPRODUCED, COPIED OR USED IN ANY MANNER WITHOUT THE PRIOR WRITTEN CONSENT OF ACCURATE INNOTECH INC.	Q'TY	CHKD: <i>Ricky</i> 2017/5/10	ATD-02X-XXS-U56		
	APPD:	SCALE	SHEET	REV.	CUSTOMER DRAWING
		1:1	1/2	A	



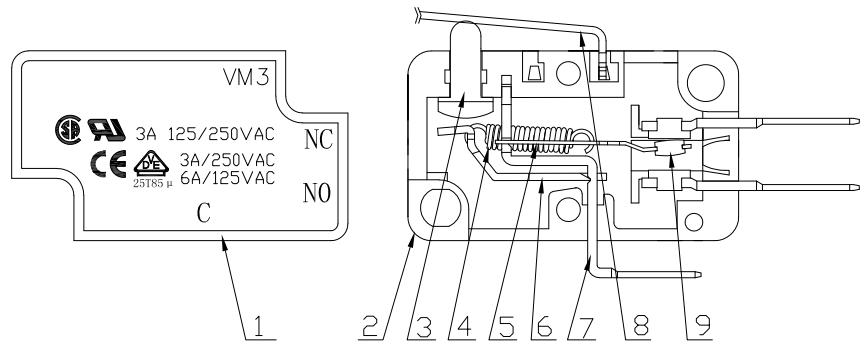
RoHS
Compliant
2002/95/EC

REV.	ECN.	NO.	APPD.

Terminal Type



Structure chart



Material list

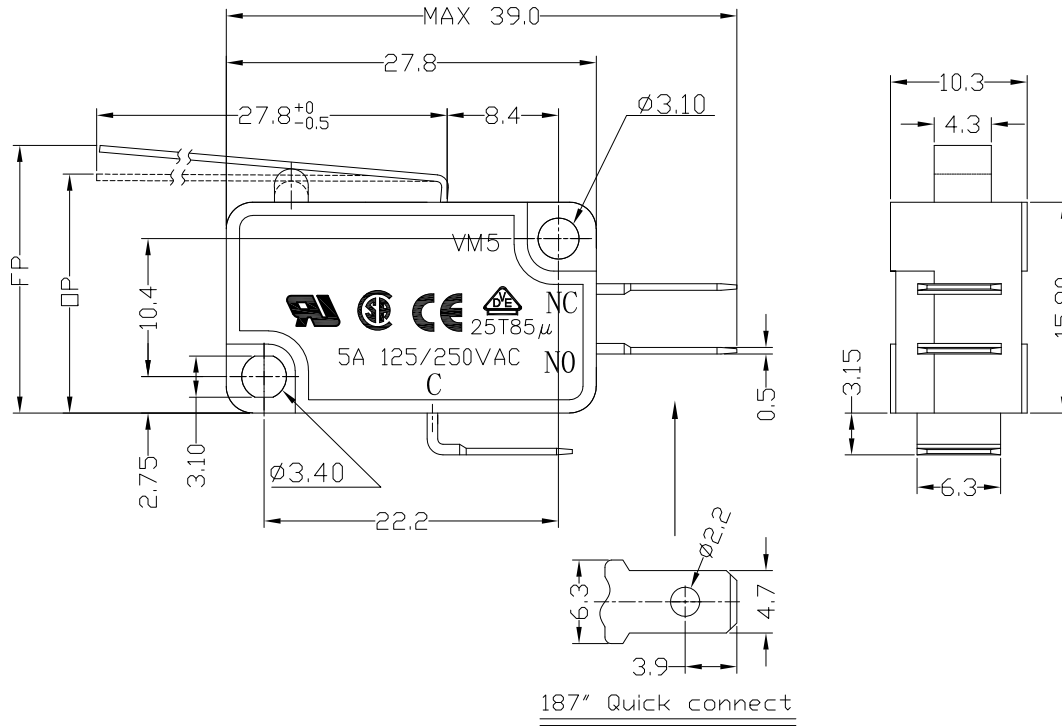
NO.	PARTS	MATERIAL	Q'TY	FINISHING	Tolerance: ± 0.2	UNITS	雅安科技有限公司 ACCURATE INNOTECH INC.			
9	Contact	Silver alloy	3		mm	SEE NOTE	TITLE: MICRO SWITCH VM3 SERIES		PART NO.: VM3-02X-XXS-U56	
8	Lever	SUS301	1				FINISH	DR: Ricky 2017/5/10		DWG NO.: ATD-02X-XXS-U56
7	Terminal	C2680	3		SEE NOTE	Q'TY	CHKD: Ricky 2017/5/10		SCALE	
6	Fixed Rod	C2680	1				APPD:		1:1	SHEET 2/2
5	Change Plate	C5210	1		THESE DRAWINGS AND SPECIFICATIONS ARE THE PROPERTY OF ACCURATE INNOTECH INC AND SHALL NOT BE REPRODUCED, COPIED OR USED IN ANY MANNER WITHOUT THE PRIOR WRITTEN CONSENT OF ACCURATE INNOTECH INC.					
4	Spring	SUS304	1							
3	Button	PBT	1	Gray						
2	Lower Housing	PBT	1	Black						
1	Upper Housing	PBT	1	Black						
NO.	PARTS	MATERIAL	Q'TY	FINISHING						



RoHS
Compliant
2002/95/EC

REV.	ECN.	NO.	APPD.

DIMENSIONS



1.Functional spec

1.1 Rated Voltage(AC)	125/250VAC
1.2 Rated Current(AC)	5A
1.3 Contact Resistance	≤100mΩ(Initial value)
1.4 Operating Force	40±15gf 70±25gf 110±30gf
1.5 Bounce Time	
1.6 Free Position	20.8±0.8mm
1.7 Operating Position	18.3±0.8mm
1.8 Position Travel	
1.9 Return Force	

2.Reliable Rating

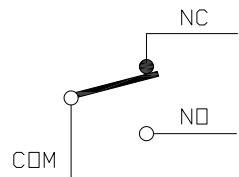
2.1 Mechanical Life	1,000,000 CYCLES
2.2 Electrical Life	10,000 CYCLES
2.3 Insulation Resistance	≥100MΩ DC500V
2.4 Withstand Voltage	AC1500V 1 minute
2.5 Soldering Technic	Hand Soldering
2.6 Operating Temper	-25°C ~ +85°C
2.7 Ambient Humidity Used	<85%RH

MODEL CODE

VM 5- 02 X-XXS-U10

1 2 3 4 5 6 7

- Series : VM
- Current Rating : 5=5A 125/250VAC
- Actuator : 00=Non-lever 01-99=Lever
- Termination : see chart (N/K)
(2=SPST-NO / 16=SPST-NC)
- Operating Force : see chart
- Spring Material:S=SUS304
- Contact type: U10=5Amps Contact



CIRCUIT DIAGRAM

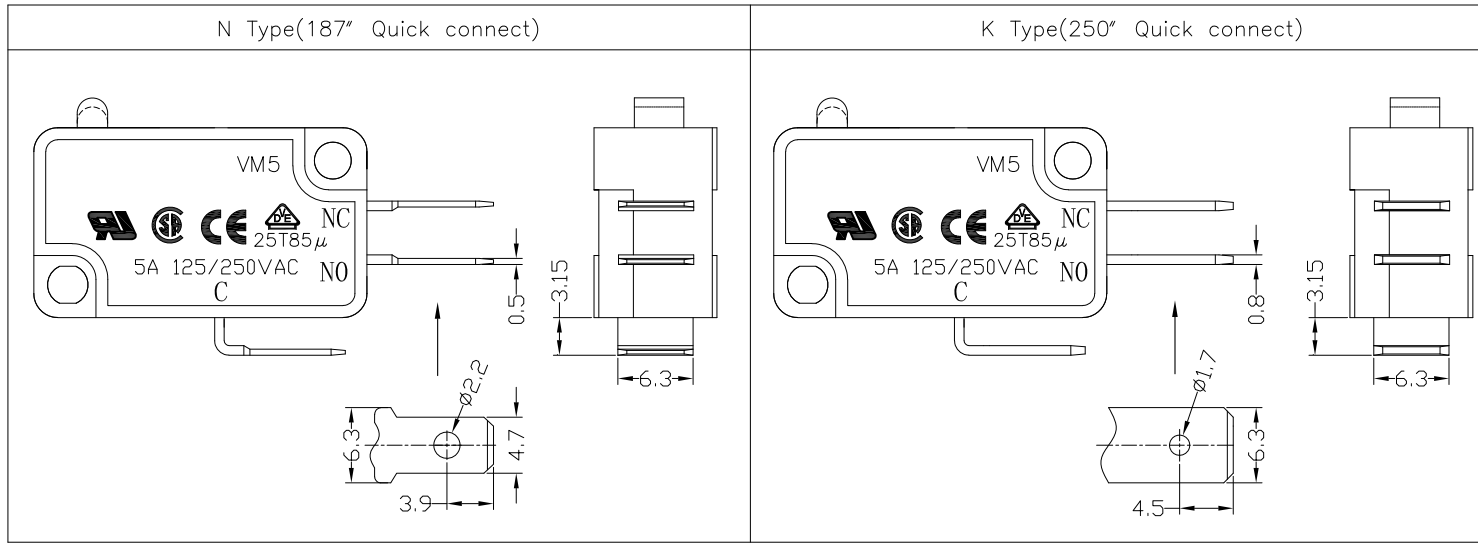
Tolerance:±0.2		UNITS	雅安科技有限公司 ACCURATE INNOTECH INC.			
		mm	TITLE:		PART NO.:	
		MAT'L	MICRO SWITCH VM5 SERIES		VM5-02N-XXS-U10	
		SEE NOTE	DR: <i>Ricky</i> 2017/5/11		DWG NO.:	
		FINISH	CHKD: <i>Ricky</i> 2017/5/11		ATD-02X-XXS-U10	
		SEE NOTE	APPD:		SCALE	SHEET
		Q'TY	11		1/2	REV. A
THESE DRAWINGS AND SPECIFICATIONS ARE THE PROPERTY OF ACCURATE INNOTECH INC AND SHALL NOT BE REPRODUCED, COPIED OR USED IN ANY MANNER WITHOUT THE PRIOR WRITTEN CONSENT OF ACCURATE INNOTECH INC.			CUSTOMER DRAWING			



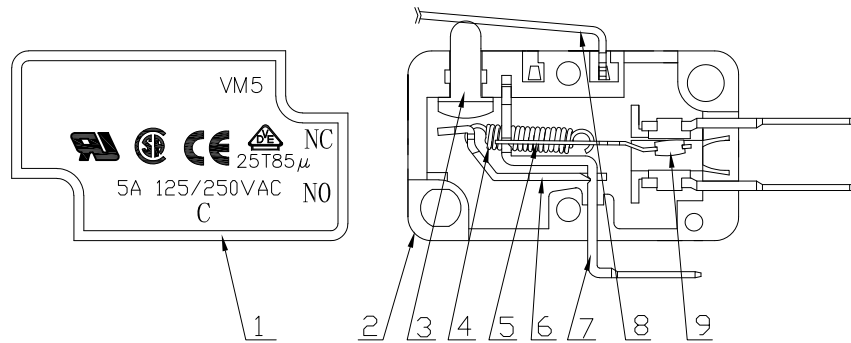
RoHS
Compliant
2002/95/EC

REV.	ECN.	NO.	APPD.

Terminal Type



Structure chart



Material list

NO.	PARTS	MATERIAL	Q'TY	FINISHING	Tolerance:±0.2	UNITS	雅安科技有限公司 ACCURATE INNOTECH INC.			
9	Contact	Silver alloy	3		mm	SEE NOTE	TITLE: MICRO SWITCH VM5 SERIES		PART NO.: VM5-02X-XXS-U10	
8	Lever	SUS301	1				FINISH	DR: Ricky 2017/5/11		DWG NO.: ATD-02X-XXS-U10
7	Terminal	C2680	3		SEE NOTE	Q'TY	CHKD: Ricky 2017/5/11		SCALE	
6	Fixed Rod	C2680	1				APPD:		1:1	SHEET 2/2
5	Change Plate	C5210	1		THESE DRAWINGS AND SPECIFICATIONS ARE THE PROPERTY OF ACCURATE INNOTECH INC AND SHALL NOT BE REPRODUCED, COPIED OR USED IN ANY MANNER WITHOUT THE PRIOR WRITTEN CONSENT OF ACCURATE INNOTECH INC.					
4	Spring	SUS304	1							
3	Button	PBT	1	Gray						
2	Lower Housing	PBT	1	Black						
1	Upper Housing	PBT	1	Black						